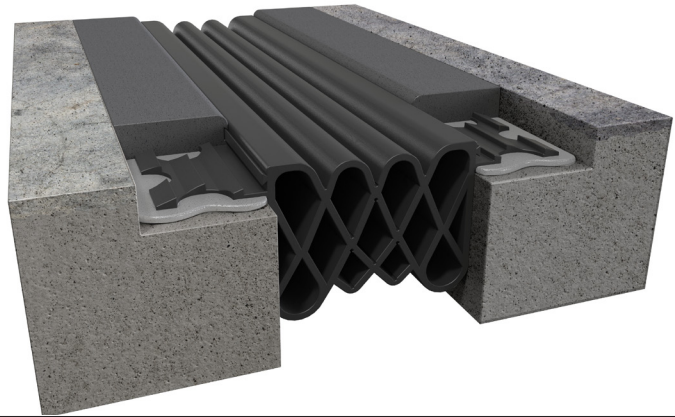


# CR-S Series Compression Seal

CR - Architectural Applications

Cape Cod Systems Corporation

Tel. 1-888-227-8555



**Movement Rating: 50%**

Product  
Guide



Thermal



Exterior



Seismic



ADA  
Compliant

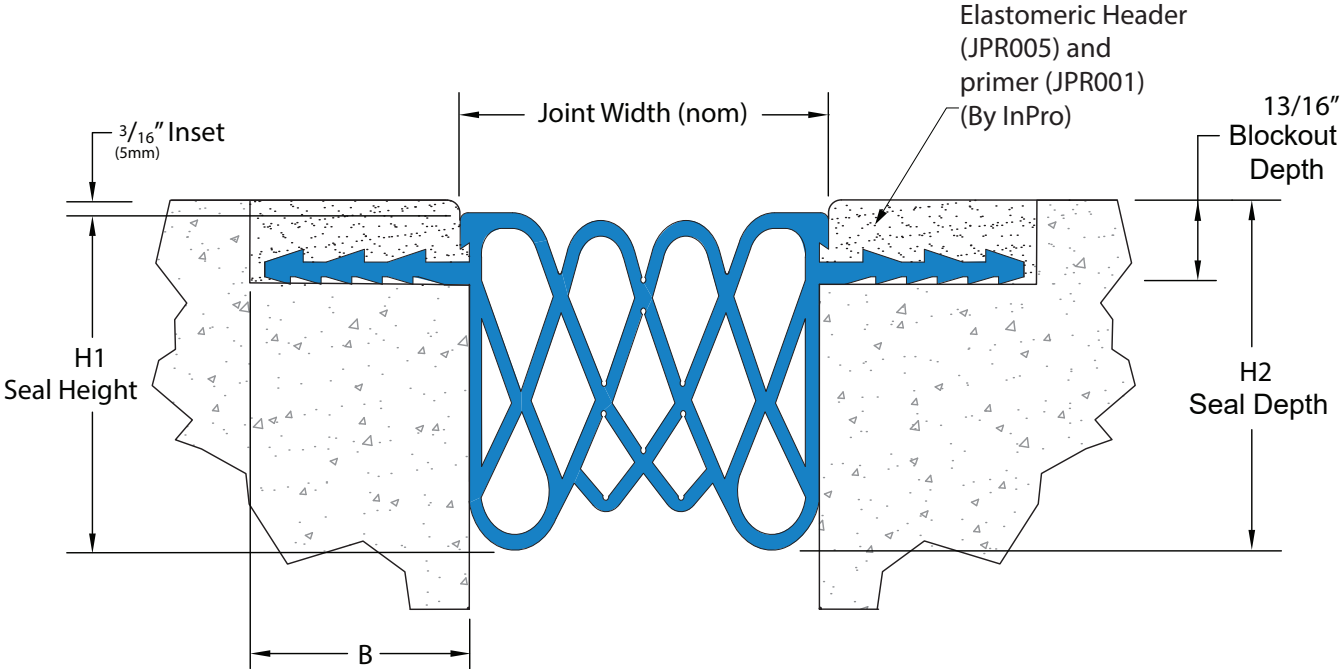
- ▶ Heavy pedestrian and vehicular loading capabilities
- ▶ Appropriate for horizontal applications where watertight conditions are required.
- ▶ Comprised of a tough synthetic rubber called "Santoprene": Superior movement while being highly resistant to UV degradation, extreme temperatures, and chemicals
- ▶ Installed in concrete decks with elastomeric concrete header & primer (See installation instructions)
- ▶ Heat weldable for watertight seams & transition points
- ▶ Industry unique profile ensures against waviness or bulging while addressing high load resistance
- ▶ Profile engineered for improved installation ease
- ▶ Color Seals available- Contact your Rep. for more information
- ▶ Lateral shear capable to 25%± nominal joint width.

| Application                           | System  | Nominal Joint Width<br>Install Range |        | H1          |    | H2              |    |
|---------------------------------------|---------|--------------------------------------|--------|-------------|----|-----------------|----|
|                                       |         |                                      |        | Seal Height |    | Installed Depth |    |
|                                       |         | US                                   | mm     | US          | mm | US              | mm |
| Architectural<br>Compression<br>Seals | CR-200S | 1 5/8"-2 3/8"                        | 41-60  | 2 3/16"     | 56 | 2 3/8"          | 60 |
|                                       | CR-300S | 2 1/2"-3 3/8"                        | 63-86  | 3 5/16"     | 84 | 3 1/2"          | 89 |
|                                       | CR-400S | 3 1/2"-4 3/8"                        | 89-111 | 3 5/16"     | 84 | 3 1/2"          | 89 |

# CR-S Series

## Compression Seal Systems

CR-S Compression Seal  
(3" (75mm) seal shown)



**Block Dim Note:** Blockout dimensions provided are recommended minimum dimensions and relate directly to header coverage. If blockout dimensions are greater than recommended dimensions contact your JointMaster Representative for additional header.