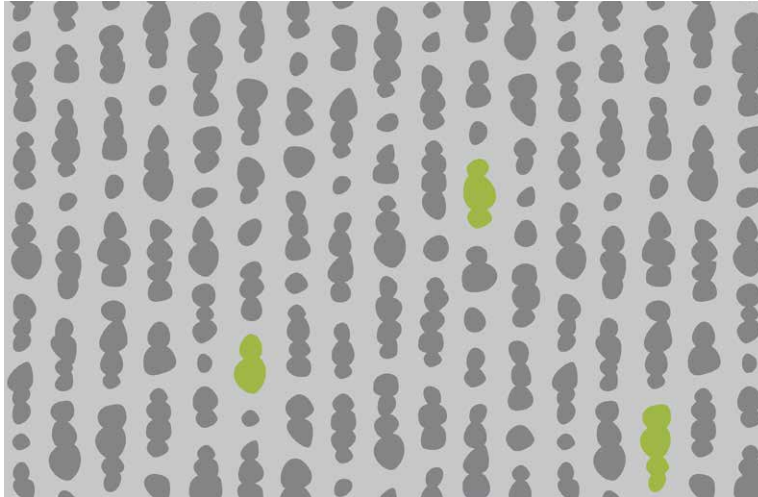


TECHNICAL IMAGE GUIDE

Standard Aspex™ Patterns

CAPE COD SYSTEMS
CORPORATION
TEL. 1-888-227-8555

Inkling



A001 - Light Grey

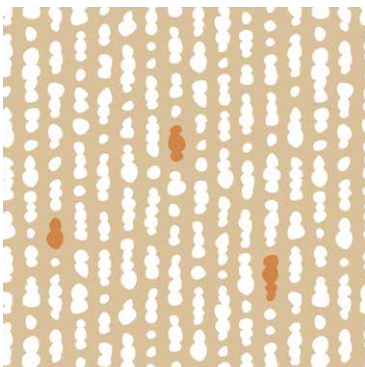
We carefully selected several on-trend patterns to add a decorative element to your space. Each pattern is available in 5 unique color options, to best coordinate with your interiors. All patterns are reverse printed with non-PVC ink to our .040" (1mm) clear PETG sheet. A polyester backing is then applied to add additional protection for the print. For more information visit www.inprocorp.com



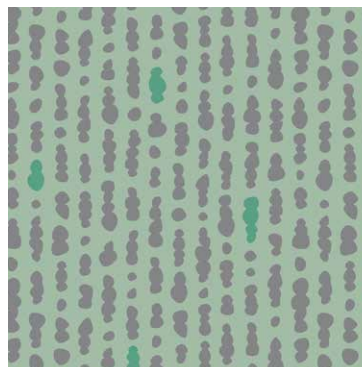
A002 - Cashmere



A003 - Blue Grey



A004 - Persimmon



A005 - Soft Green

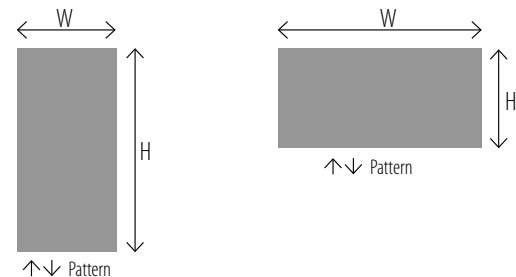
Tiled Pattern

Inkling pattern repeats every 12" (305mm) horizontally and vertically.

Panel Size & Pattern Direction

Full Panel:
48" Wide by
120" High
(1.22m x 3.05m)

Wainscot Panel:
120" Wide by
48" High
(3.05m x 1.22m)

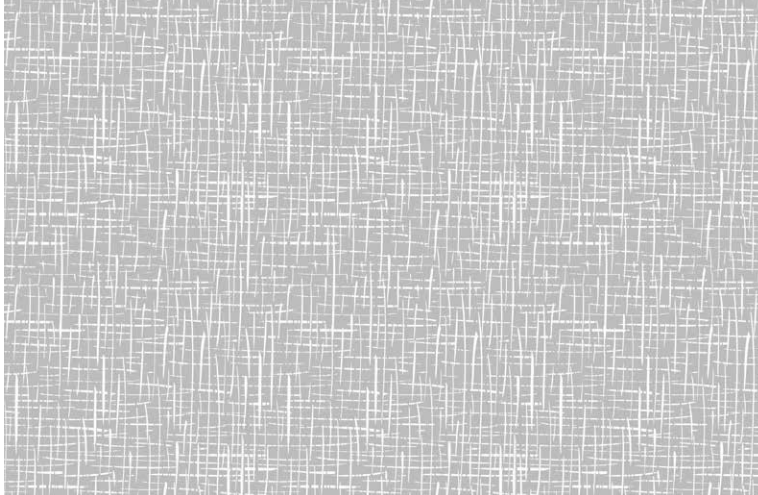


Due to the printing process, colors may vary. For more accurate color selections, please request a sample.

TECHNICAL IMAGE GUIDE

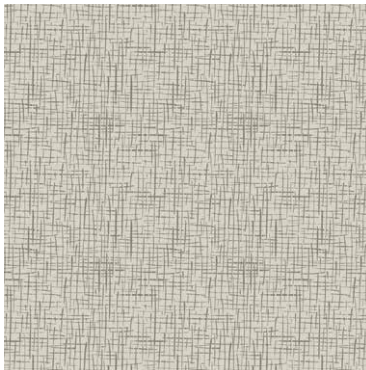
Standard Aspex™ Patterns

Entwine



A016 - Light Grey

We carefully selected several on-trend patterns to add a decorative element to your space. Each pattern is available in 5 unique color options, to best coordinate with your interiors. All patterns are reverse printed with non-PVC ink to our .040" (1mm) clear PETG sheet. A polyester backing is then applied to add additional protection for the print. For more information visit www.inprocorp.com



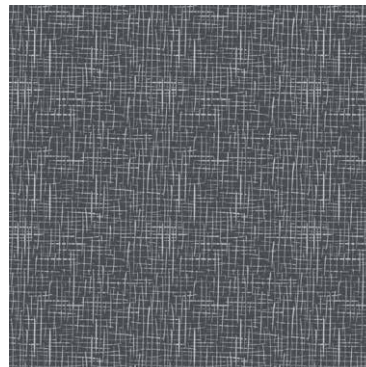
A017 - Cashmere



A018 - Blue Grey



A019 - Aquamarine



A020 - Dark Grey

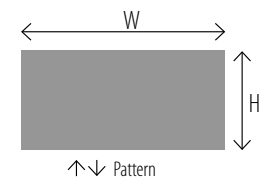
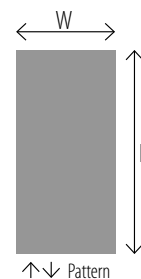
Tiled Pattern

Entwine pattern repeats every 6" (152mm) horizontally and vertically.

Panel Size & Pattern Direction

Full Panel:
48" Wide by
120" High
(1.22m x 3.05m)

Wainscot Panel:
120" Wide by
48" High
(3.05m x 1.22m)

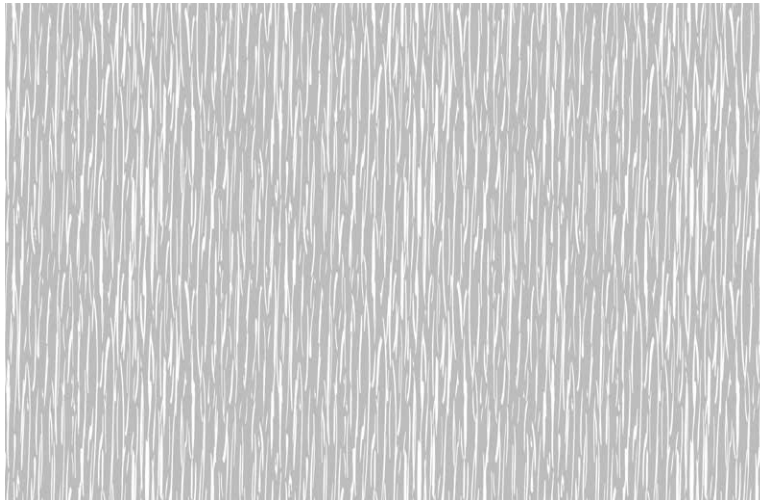


Due to the printing process, colors may vary. For more accurate color selections, please request a sample.

TECHNICAL IMAGE GUIDE

Standard Aspex™ Patterns

Prairie



A021 - Blue Grey

We carefully selected several on-trend patterns to add a decorative element to your space. Each pattern is available in 5 unique color options, to best coordinate with your interiors. All patterns are reverse printed with non-PVC ink to our .040" (1mm) clear PETG sheet. A polyester backing is then applied to add additional protection for the print. For more information visit www.inprocorp.com



A022 - Cashmere



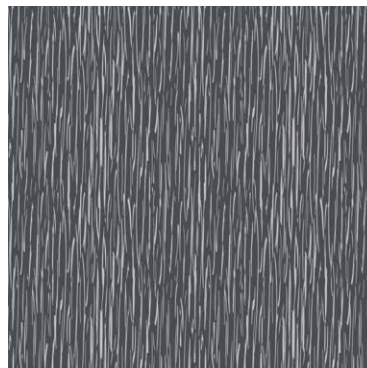
A023 - Blue Grey

Tiled Pattern

Prairie pattern repeats every 6" (152mm) horizontally and vertically.



A024 - Persimmon

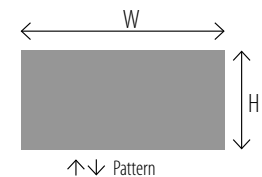


A025 - Dark Grey

Panel Size & Pattern Direction

Full Panel:
48" Wide by
120" High
(1.22m x 3.05m)

Wainscot Panel:
120" Wide by
48" High
(3.05m x 1.22m)



Due to the printing process, colors may vary. For more accurate color selections, please request a sample.

TECHNICAL IMAGE GUIDE

Standard Aspex™ Patterns

Bloom



A026 - Light Grey

We carefully selected several on-trend patterns to add a decorative element to your space. Each pattern is available in 5 unique color options, to best coordinate with your interiors. All patterns are reverse printed with non-PVC ink to our .040" (1mm) clear PETG sheet. A polyester backing is then applied to add additional protection for the print. For more information visit www.inprocorp.com



A027 - Cashmere



A028 - Blue Grey

Tiled Pattern

Bloom pattern repeats every 12" (305mm) horizontally and vertically.



A029 - Persimmon

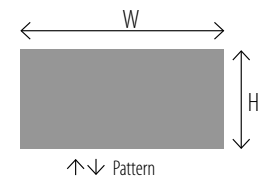
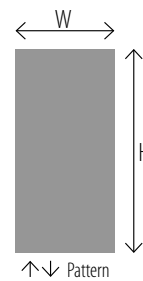


A030 - Soft Green

Panel Size & Pattern Direction

Full Panel:
48" Wide by
120" High
(1.22m x 3.05m)

Wainscot Panel:
120" Wide by
48" High
(3.05m x 1.22m)

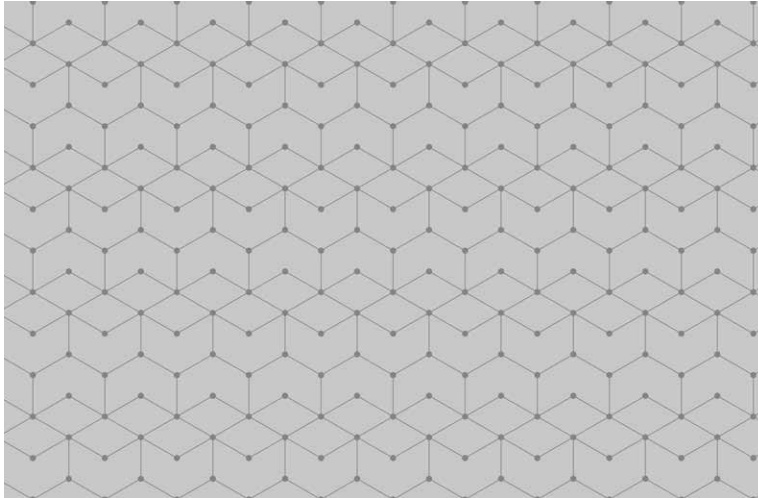


Due to the printing process, colors may vary. For more accurate color selections, please request a sample.

TECHNICAL IMAGE GUIDE

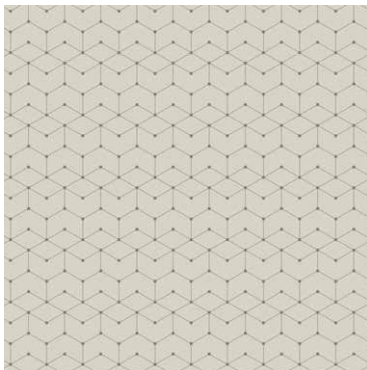
Standard Aspex™ Patterns

Interstellar

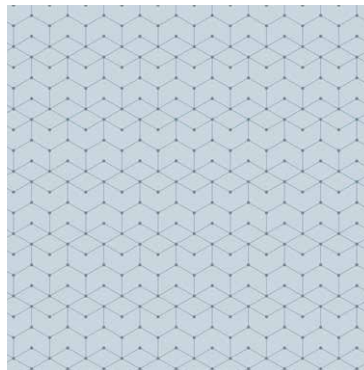


A006 - Light Grey

We carefully selected several on-trend patterns to add a decorative element to your space. Each pattern is available in 5 unique color options, to best coordinate with your interiors. All patterns are reverse printed with non-PVC ink to our .040" (1mm) clear PETG sheet. A polyester backing is then applied to add additional protection for the print. For more information visit www.inprocorp.com



A007 - Cashmere



A008 - Aquamarine

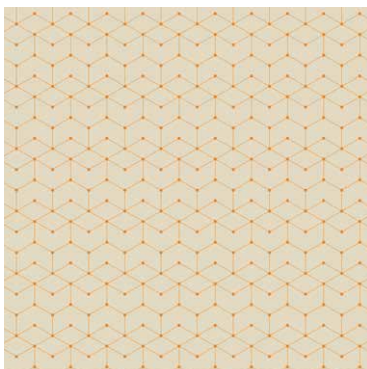
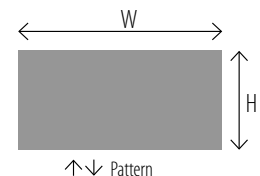
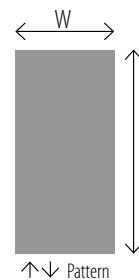
Tiled Pattern

Interstellar pattern repeats every 7" (178mm) horizontally and 6" (152mm) vertically.

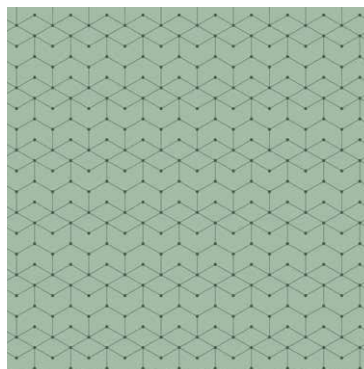
Panel Size & Pattern Direction

Full Panel:
48" Wide by
120" High
(1.22m x 3.05m)

Wainscot Panel:
120" Wide by
48" High
(3.05m x 1.22m)



A009 - Persimmon



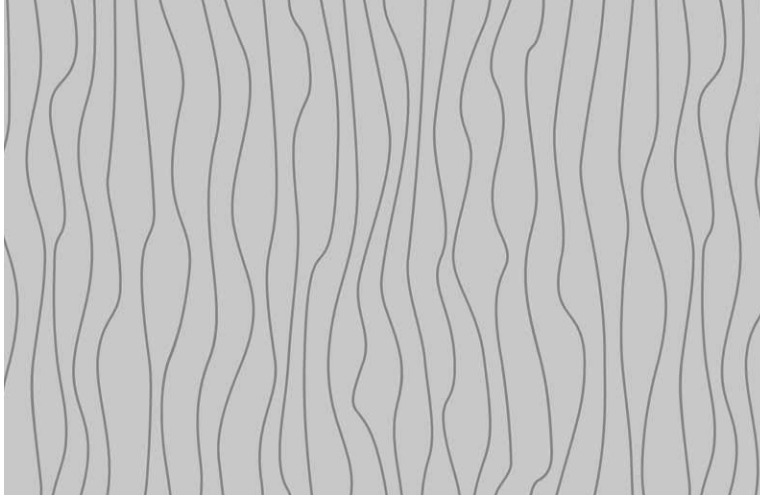
A010 - Soft Green

Due to the printing process, colors may vary. For more accurate color selections, please request a sample.

TECHNICAL IMAGE GUIDE

Standard Aspex™ Patterns

Drift

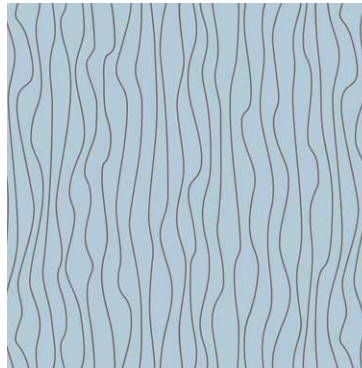


A011 - Light Grey

We carefully selected several on-trend patterns to add a decorative element to your space. Each pattern is available in 5 unique color options, to best coordinate with your interiors. All patterns are reverse printed with non-PVC ink to our .040" (1mm) clear PETG sheet. A polyester backing is then applied to add additional protection for the print. For more information visit www.inprocorp.com



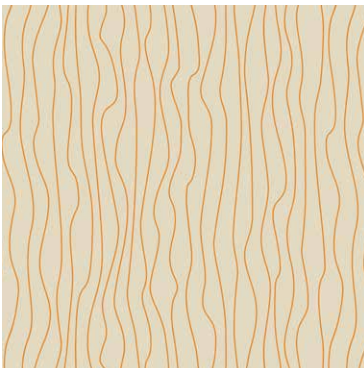
A012 - Cashmere



A013 - Blue Grey

Tiled Pattern

Drift pattern repeats every 9" (229mm) horizontally and 8" (203mm) vertically.



A014 - Persimmon

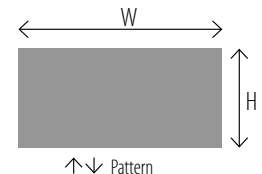
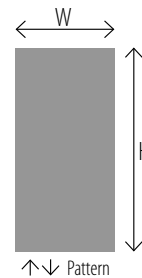


A015 - Soft Green

Panel Size & Pattern Direction

Full Panel:
48" Wide by
120" High
(1.22m x 3.05m)

Wainscot Panel:
120" Wide by
48" High
(3.05m x 1.22m)



Due to the printing process, colors may vary. For more accurate color selections, please request a sample.