



**Whitehall Manufacturing®**  
 Manufacturer of Healthcare and Rehabilitation Products since 1946

**BestCare®**  
 Patients, Not Prisoners®

**Healthcare and Ligature  
 Resistant Products**

**CAPE COD SYSTEMS  
 CORPORATION**  
**TEL. 1-888-227-8555**

Division of  
 Acorn Engineering Company®



A MEMBER OF



**Whitehall  
 Ligature Resistant  
 High Efficiency  
 Urinal**

Model WH2158-W-SLPT-EB-EG10  
 (Wall Supply)



WH2158-W-SLPT-EB-EG10

[www.capecodsystems.com](http://www.capecodsystems.com)

**Ligature Resistant High Efficiency  
 Urinal**

**High Efficiency Urinal** is engineered to combine attractive looks, versatility and intended for mounting onto a finished wall from the front side.

**Fixture** housing is fabricated of 18 gage, with bowl of 16 gage, type 304 stainless steel. All exposed surfaces are powder coated white.

**Urinal** is a high efficiency type requiring a 0.125 GPF (0.47 Liters per flush) to 0.5 GPF (1.8 Liters per flush) flush valve and supplied with 3/4" NPT flushing inlet connection and stainless steel bee hive dome strainer with 1-1/2" O.D. P-Trap assembly.

**Optional Flush Valve** is concealed type with cast bronze body. Flush valve supply is available in 0.125 GPF and 0.5 GPF.

**Installation** is front mount and the fixture includes an enclosed bottom with access panel that can be removed to facilitate mounting directly to a reinforced wall from within the housing.

**GUIDE SPECIFICATION**

Provide Ligature Resistant Stainless Steel High Efficiency Urinal (specify model number and options). Interior to have a contoured surface to facilitate cleaning. Unit has an enclosed bottom with removable access panel. Fixture shall be fabricated of 18 gage, with 16 gage bowl, type 304 stainless steel. All exposed surfaces are powder coated white.

Please visit [www.whitehallmfg.com](http://www.whitehallmfg.com) for most current specifications.



Member of  
 U.S. Green  
 Building  
 Council



Recyclable  
 Product



Water  
 Conserving  
 Product

Complies  
 with the  
 following  
 standards:



Whitehall Mfg. • P.O. Box 3527 • City of Industry, CA 91744 • (800) 782-7706 • (626) 968-6681 • Fax (626) 855-4862

**WH2158-W-SLPT**

Updated: 07/11/22



**CAPE COD SYSTEMS CORPORATION**  
 TEL. 1-888-227-8555  
[www.capecodsystems.com](http://www.capecodsystems.com)

**MODEL AND OPTIONS SELECTION:**

**BASE MODEL NUMBER**

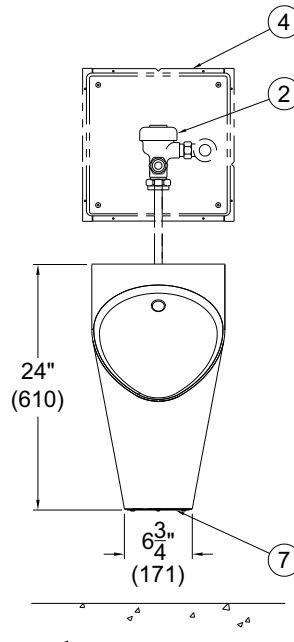
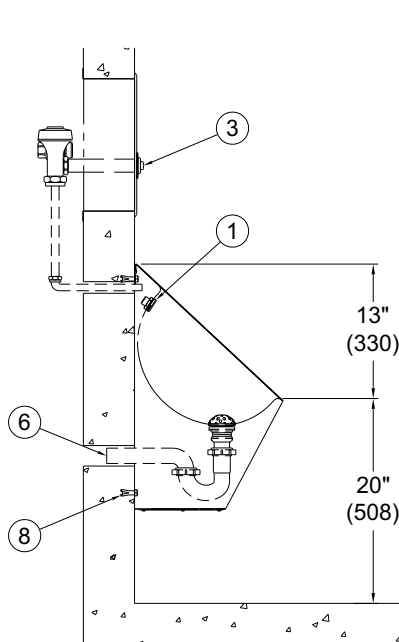
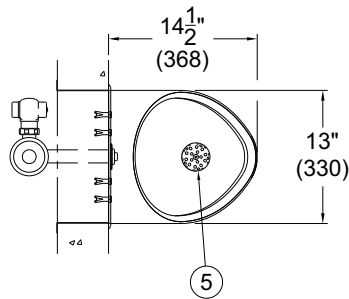
WH2158-W-SLPT-EB-EG10      Ligature Resistant Urinal (White)

**With Optional Flush Valve and Access Panel (Must Specify):**

- WH2898-ADA-EG10-0.125    Access Panel with Hydraulic Flush Valve for Urinal, 0.125 GPF (White)
- WH2898-ADA-EG10-0.5      Access Panel with Hydraulic Flush Valve for Urinal, 0.5 GPF (White)

**NOTES:**

1. Flush Nozzle
2. Flush Valve
3. Pushbutton
4. 2898 Flush Valve Access Panel (Shown For Reference)
5. Removable Strainer Assembly
6. 1-1/2" O.D. P-Trap Assembly
7. Removable Access Panel
8. Wall Mounting Anchors (By Others)



MODEL #WH2158W-SLPT-EB

**DISCLAIMER:**

This product is designed to decrease the probability that it may be utilized as an apparatus for ligature. It is not a replacement for professionals who are trained in the proper evaluation, management and supervision of persons at risk of suicide.

**WARNING:** Cancer and Reproductive Harm - [www.P65Warnings.ca.gov](http://www.P65Warnings.ca.gov)

**SELECTION SUMMARY & APPROVAL FOR MANUFACTURING**

Model Number & Options \_\_\_\_\_ Quantity \_\_\_\_\_  
 Company \_\_\_\_\_ Date \_\_\_\_\_  
 Contact \_\_\_\_\_ Title \_\_\_\_\_  
 Approval for Manufacturing/Signature \_\_\_\_\_

All dimensions are nominal and subject to manufacturer's change without notice. Whitehall assumes no responsibility for use of void or superseded data © Whitehall Manufacturing, Member of Morris Group International. Please visit [www.whitehallmfg.com](http://www.whitehallmfg.com) for most current specifications.