



**Whitehall Manufacturing®**  
Manufacturer of Healthcare and Rehabilitation Products since 1946

## Bariatric Toilets

Division of  
Acorn Engineering Company®



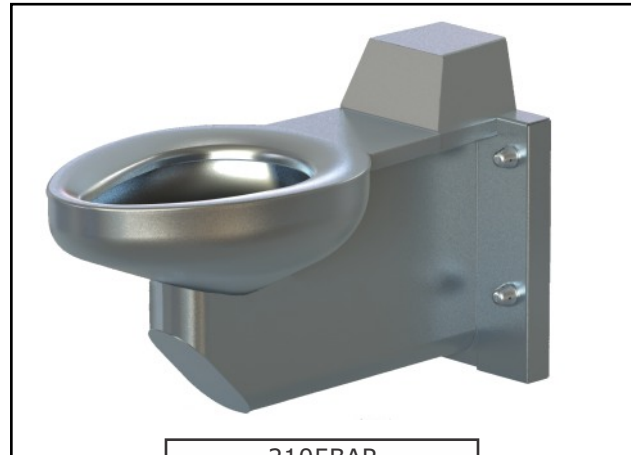
A MEMBER OF



### Whitehall Bariatric Off-Floor Toilet

Model 2105BAR

**CAPE COD SYSTEMS CORPORATION**  
**1-888-227-8555**  
**[www.capecodsystems.com](http://www.capecodsystems.com)**



2105BAR

Fixture May Show Some Available Options

#### Bariatric Toilet - Off Floor

Toilet is arranged to be installed on a finished wall from the front side using an appropriate Bariatric Support System to be provided by others. Optional -HSBJ Big John® hinged Toilet Seat is rated at 1,200 lbs. Toilet bowl and Internal Sub-Frame are fabricated from 14 gage type 304 stainless steel, is seamless welded construction, and includes an integral contoured Seat. Fixture is rated at 1000 lbs Bariatric load when used in conjunction with an appropriately rated Bariatric Support System, provided by others. Fixture interior and exterior has a satin finish.

**Toilet** is Siphon Jet type with elongated Bowl manufactured to comply with ASME A112.19.3 and CSA B45.4 standards. Toilet requires a minimum of 25 PSI flow pressure and uses a minimum water consumption of 1.28 GPF. Trap has a minimum 3-1/2" seal, will pass a 2-1/8" ball and is fully enclosed. Toilet has a 1-1/2" NPT Flush Valve connection and a gasketed Waste Outlet.

**Flush Valve** supply is additionally available for exposed or concealed Flush Valve styles in 1.28 GPF, 1.6 GPF or 3.5 GPF with 1-1/2" NPT connection..

#### GUIDE SPECIFICATION

Provide and install Whitehall Bariatric Toilet (specify model number and options) rated at 1000 lbs. Toilet bowl and Internal Sub-Frame shall be fabricated from 14 gage, type 304 stainless steel. Construction shall be seamless welded and all exposed surfaces shall have a satin finish with an integral contoured Toilet Seat. Toilet shall be concealed Siphon Jet type with an elongated Bowl and a self-draining flushing rim. Toilet shall be ASME A112.19.3 and CSA B45.4 compliant. Toilet requires a minimum of 25 PSI flow pressure and uses a minimum water consumption of 1.28 GPF. Toilet trap shall have a minimum 3-1/2" seal that shall pass a 2-1/8" diameter ball and be fully enclosed. Toilet waste outlet shall be a gasketed Waste.

Please visit [www.whitehallmfg.com](http://www.whitehallmfg.com) for most current specifications.



Member of  
U.S. Green  
Building  
Council



Recyclable  
Product



Water  
Conserving  
Product

Complies  
with the  
following  
standards:



Whitehall Mfg. • P.O. Box 3527 • City of Industry, CA 91744 • (800) 782-7706 • (626) 968-6681 • Fax (626) 855-4862

**2105BAR**

REVISED: 07/01/22

**WALL THICKNESS AND TYPE (Must Specify)**

Thickness \_\_\_\_\_ Type \_\_\_\_\_

**MODEL NUMBER AND OPTIONS SELECTION****BASE MODEL NUMBER**☒ 2105BAR Bariatric Toilet**SUPPLY (Must Specify)**

- ☐ -T Top (Exposed)  
☐ -W Wall (Concealed)

**FIXTURE MOUNTING AND WASTE**☒ -1 Off-Floor, Wall Outlet**FLUSH VALVE GPF's (Must Specify)**

- ☐ -1.28 GPF (HET)  
☐ -1.6 GPF  
☐ -3.5 GPF

**FLUSH VALVE OPTIONS (Must Specify)**

**\*SEE ACORN DURA-WARE SUPPLEMENTARY MATERIAL  
FOR FLUSH VALVE COVERS AND BOXES\***

- ☐ -FV Flush Valve (N/A for ADA)  
☐ -FVBO Flush Valve by Others  
☐ -FVH Flush Valve, Hydraulic  
☐ -FVL Flush Valve, ADA Lever Handle (Wall Supply)  
☐ -MVCFV Time-Trol Flush Valve (N/A for Top Supply)

**TOILET SEAT OPTIONS**

- ☐ -HSBJ Big John® Hinged Seat 1,200 lbs Rated  
☐ -Open Front Less Cover  
☐ -Open Front With Cover  
☐ -HPS High Polish Integral Seat  
☐ -PFS Punched for Seat by Others

**TOILET OPTIONS**

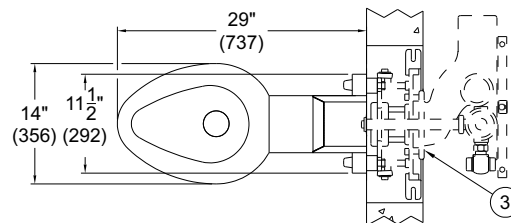
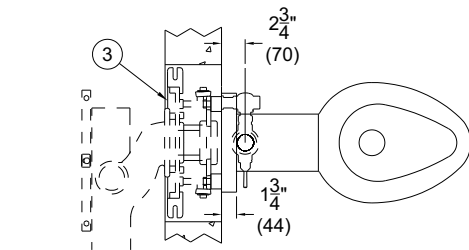
- ☐ -BL Bedpan Lugs  
☐ -FT Flood-Trol (N/A w/ Top Supply)\*\*  
☐ -FTA Flood-Trol Auto-Reset (N/A w/ Top Supply)\*\*  
☐ -FTE Flood-Trol Electronic\*\*

(NOTE: \*\*Not available with Top Supply or -FM Front Mount)

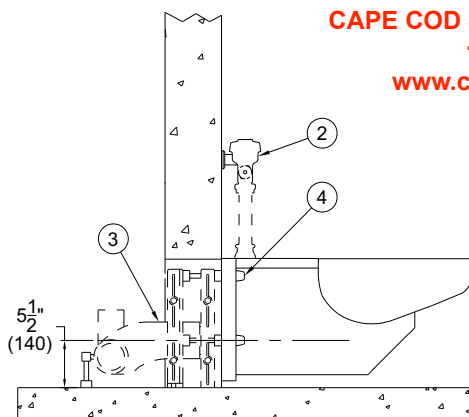
- ☐ -FVT Flush Thru Wall Connector  
☐ -HET High Efficiency Toilet Design  
☐ -TF Transformer, 120VAC to 24VAC (For -MVCFV)  
☐ -TSC Toilet Shipping Cover

**PRODUCT OPTIONS**

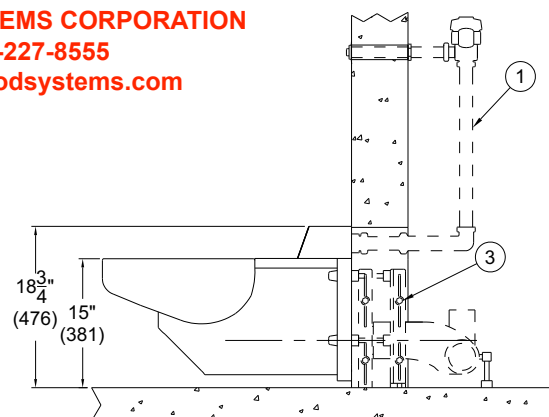
- ☐ -ADA 18" Integral Seat Height  
☐ -BCN Blind Cap Nuts (4)  
☐ -CN Cap Nuts (4)  
☐ -EGE Enviro-Glaze Color Specify: \_\_\_\_\_  
☐ -VAC Toilet Exterior Only  
AcornVac System

**CAPE COD SYSTEMS CORPORATION**

1-888-227-8555

[www.capecodsystems.com](http://www.capecodsystems.com)

2105BAR-T-1



2105BAR-W-1

**NOTES:**

1. Optional -FV Flush Valve -Wall Supply  
2. Optional -FV Flush Valve -Top Supply

3. Bariatric Rated Mounting Carrier (By Others)  
4. Optional -CN Cap Nuts

**⚠ WARNING: Cancer and Reproductive Harm - [www.P65Warnings.ca.gov](http://www.P65Warnings.ca.gov)**

**SELECTION SUMMARY & APPROVAL FOR MANUFACTURING**

Model Number & Options \_\_\_\_\_ Quantity \_\_\_\_\_  
Company \_\_\_\_\_ Date \_\_\_\_\_  
Contact \_\_\_\_\_ Title \_\_\_\_\_  
Approval for Manufacturing/Signature \_\_\_\_\_

All dimensions are nominal and subject to manufacturer's change without notice. Whitehall assumes no responsibility for use of void or suspended data. © Whitehall Manufacturing, Member of Morris Group International. Please visit [www.whitehallmfg.com](http://www.whitehallmfg.com) for most current specifications.