

WDCA - Electronic Washroom Controller

- **WDCA100** – electronic controller with the ability to manage water flow to a maximum of **four** identical or similar sanitary ware items including toilets in a single room
- **WDCA200** – electronic controller with the ability to manage water flow to a maximum of **eight** identical or similar sanitary ware items including toilets in up to two adjoining rooms



PRINCIPLE

The WDCA range is Wallgate by Intersan's highly flexible and fully programmable secure environment electronic controllers. The WDCA electronic controllers allow the precise control of water flow to multiple basins, showers and toilets from a single 120V, 60Hz amp power supply. All device cable connections are fully plug and play and are external to the box with four additional inputs allowing additional features to be incorporated.

Activated by either Piezo touch button or infra-red sensor, through its simple menu system and LCD display the parameters for each device can be individual and repeatedly programmed. Capable of lockouts, timed flow and dual flush.

WDCA100

The WDCA100 Single Room electronic controller manages water flow to a maximum of four sanitary ware items including basins and toilets in a single room. However, it can also be used to operate and control multiples of identical devices such as a bank of showers.

The WDCA100 controller should NOT be "shared" among two adjoining rooms. If shared in communal mode, it does NOT provide key "Lockout" controls which is usually a requirement in secure applications. Where you plan on sharing a controller among a few fixtures in adjoining rooms, use the WDCA200 instead.

WDCA200

The WDCA200 electronic controller manages water flow to a maximum eight inputs for Wallgate by Intersan electronically controlled fixtures, including toilets, showers, basins and tubs - in a maximum of two adjoining rooms or cells sharing a common service duct. Alternatively, it can be used to drive a bank of toilets, showers or basins in a communal environment.

In addition there are a further 6 inputs that can be used to drive various functions such as dual flush, remote flush and remote cell shutdown. As every parameter within the controller is fully programmable, 5 pre-programmed default operational modes have been included in the software to simplify and shorten the set-up process. The menu has been designed to be simple to navigate around using the four input buttons mounted on the front panel and the large LCD display screen.

FEATURE COMPARISON

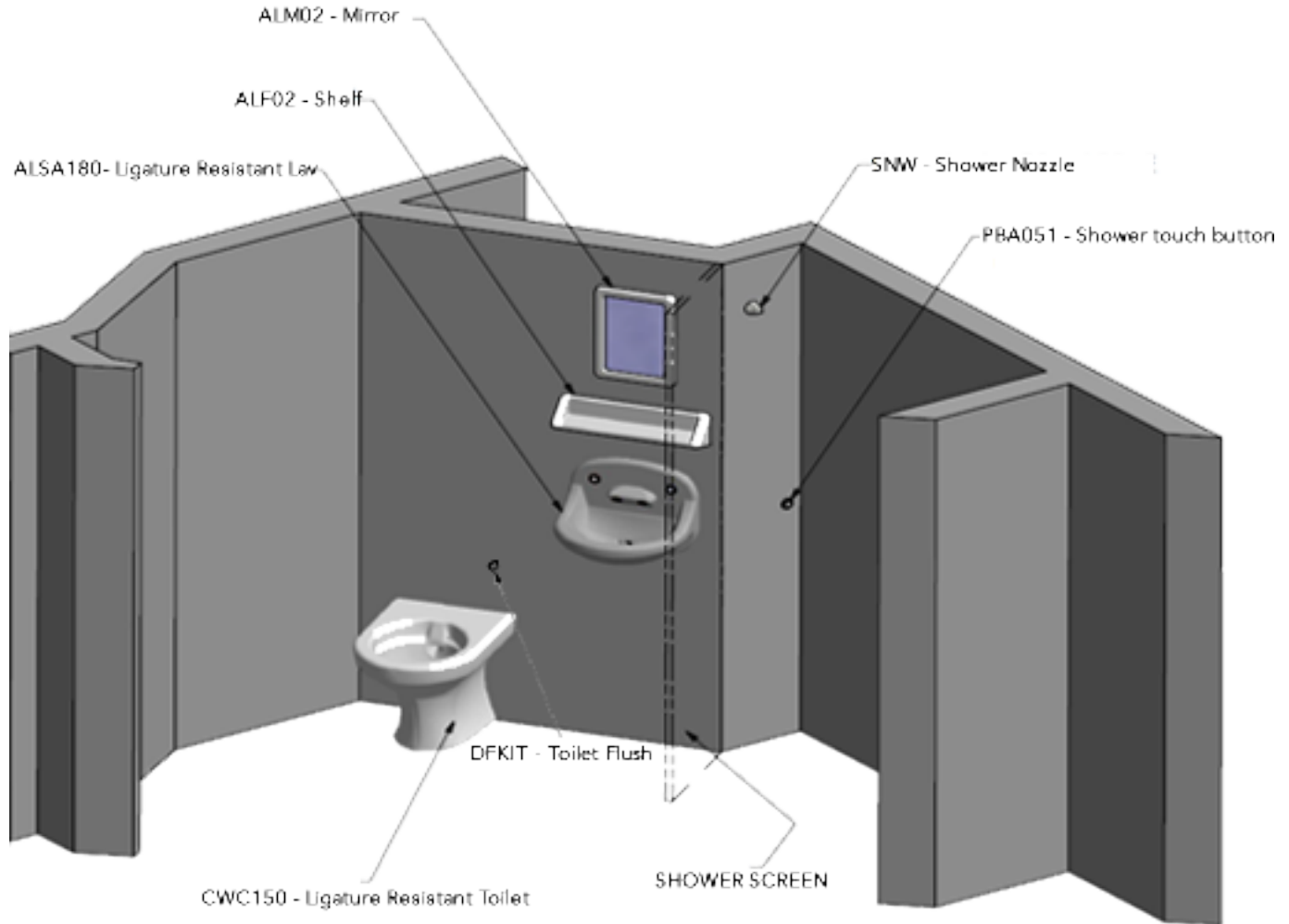
	WDCA100	WDCA200
Power use rating	50W	50W
Maximum number of rooms per unit	1	2
Maximum number of solenoid valve	4	8
Dual flush compatible	Yes	Yes
Timed flow and lockouts	Yes	Yes
Controls communal banks of toilets, showers or sinks	No	Yes
Network capable	No	Yes
Time slot selection for showers, etc.	No	Yes

MODEL SELECTION

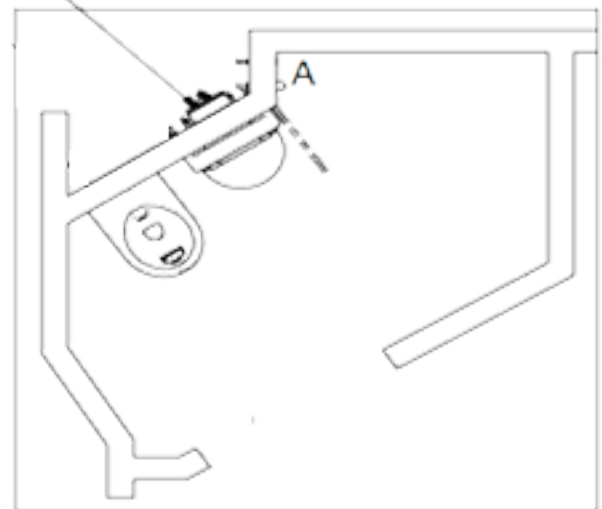
Base Model (must specify)

- WDCA100 Electronic water control (4 valves)
- WDCA200 Electronic water control (8 valves)

TYPICAL INSTALLATION WDCA100



WDCA100 Controller in service duct



CAPE COD SYSTEMS CORPORATION
TEL. 1-888-227-8555
FAX. 1-508-888-8140
www.capecodsystemscompany.com