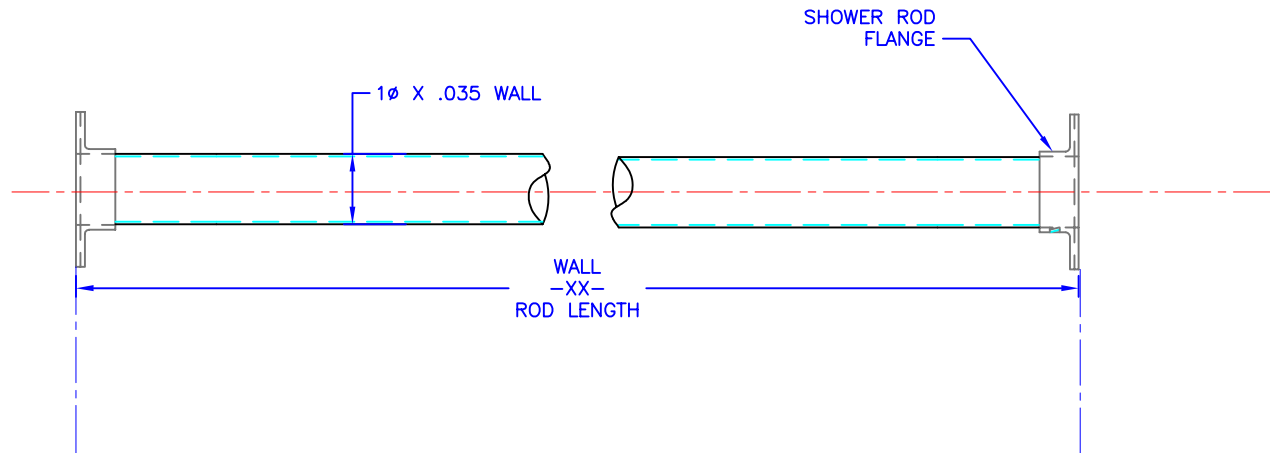




# Technical Data U-1024-XX-XX

1" DIAMETER X .035W. SHOWER ROD



PART NUMBER -LENGTH - FINISH

U-1024 - XX - XX

FINISHES:

- SS = SATIN STAINLESS
- BS = BRIGHT STAINLESS
- PC = POWDER COAT (SPECIFY COLOR)

### Construction:

TYPE 304 STAINLESS STEEL TUBE.  
1"Ø X .035WALL (20 GAUGE).  
CUT TO DESIRED LENGTH (-XX-)

### Operation:

HOLDS SHOWER CURTAIN.

### Installation:

TO BE ASSEMBLED WITH MOUNTING OF SHOWER ROD FLANGES, NOT INCLUDED WITH THIS PART NUMBER.

### Guide Specification:

TYPE 304 STAINLESS STEEL.  
1"Ø X .035 WALL (20 GAUGE).

**CAPE COD SYSTEMS CORPORATION**

**TEL.1-888-227-8555**

**www.capecodsystems.com**