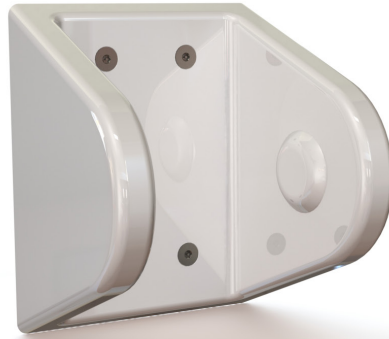


**Cape Cod Systems**  
888-227-8555  
[www.capecodsystems.com](http://www.capecodsystems.com)



## Toilet Roll Holder

TRH02

### Ligature Resistant Toilet Roll Holder

Dimensions	Approvals	Material
7 <sup>1</sup> / <sub>4</sub> " x 6 <sup>1</sup> / <sub>8</sub> " x 4 <sup>3</sup> / <sub>4</sub> "	Non flammable, BS476 Pt 6 & 7 Class '0' and Class '1' ISO EN 197 12-3-2007 rated 5 for durability, stain resistance, cigarette burns etc	Solid Surface

#### Description

The TRH-02 is Wallgate by AquaDesign's single cast anti-ligature vandal resistant solid surface toilet roll holder. The TRH-02 is securely fastened using security screws making it front fixing only.

The TRH-02 range is extremely tough, being made from the highest grade solid surface materials. This makes it ideal for the Secure Environments and Healthcare Environments where ligature and vandal resistant sanitary ware may be preferred, however with it's domestic appearance it is suitable for all markets.

The TRH02 has 1/16" flat surface on the top to facilitate the application of an anti-pick sealant. This should be applied and then profiled using a suitable tool, to follow the angle of the top of the toilet roll holder.

The TRH02 fits toilet rolls with a 1-5/8" min. ID and 4-1/8" max. width. Color and finish is always high polished polar white.

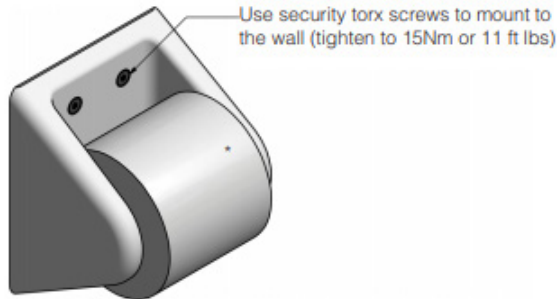
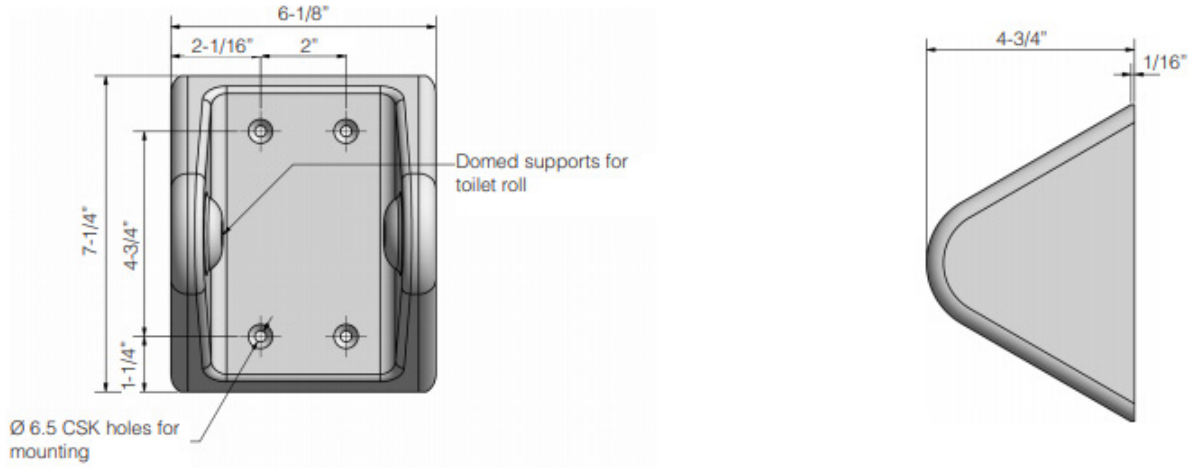
#### Features

- Ligature resistant
- Vandal resistant
- Helps normalize environment
- Hygienic and easily cleaned
- proven long-term product life



**WARNING:** Cancer and Reproductive Harm  
[www.P65Warnings.ca.gov](http://www.P65Warnings.ca.gov)

Cape Cod Systems  
 888-227-8555  
[www.capecodsystems.com](http://www.capecodsystems.com)



001	<b>Base Model Number</b> (must specify)
<input type="checkbox"/>	TRH02      Ligature Resistant Toilet Roll Holder

In the absence of a legal or industry definition of anti-ligature or ligature resistant products, when we use these terms, we are referring to products that are designed and manufactured with the intention of reducing the risk of ligature attachment to the product(s). PSD LLC will always endeavour to design and test our anti-ligature product(s) to reduce the risk of product ligature attachment that may result in serious injury or death. Whilst all reasonable measures are taken at the time of design, the anti-ligature design of the products are not intended to and will not:

- a. Replace protective measures that need to be taken in the specific circumstances of usage;
- b. Substitute the need for supervision of those who may be at risk;
- c. Protect and or prevent those at risk against any self-harm instances that may occur when installed; and
- d. Protect and or prevent injury when the risks were unknown to us at the time of the design of the product(s).

PSD LLC does not offer and does not represent or warrant that any product(s) for sale that are ligature-free. Therefore, PSD LLC will not be liable for any claims, loss, or damages arising from ligature attachment on our products. It is the purchaser's responsibility to ensure that products purchased and installed are suitable for the environments in which they are installed, and suitable supervision and protective measures are in place to protect those at risk.

Whilst all reasonable care has been taken in compiling the information in this document, the designs, dimensions and products shown are indicative only and should not be relied upon without our prior approval. Due to our policy of continuous development, we reserve the right to alter any details of specifications or products without notice. All information, drawings, technical specifications and product designs remains the property of PSD LLC.