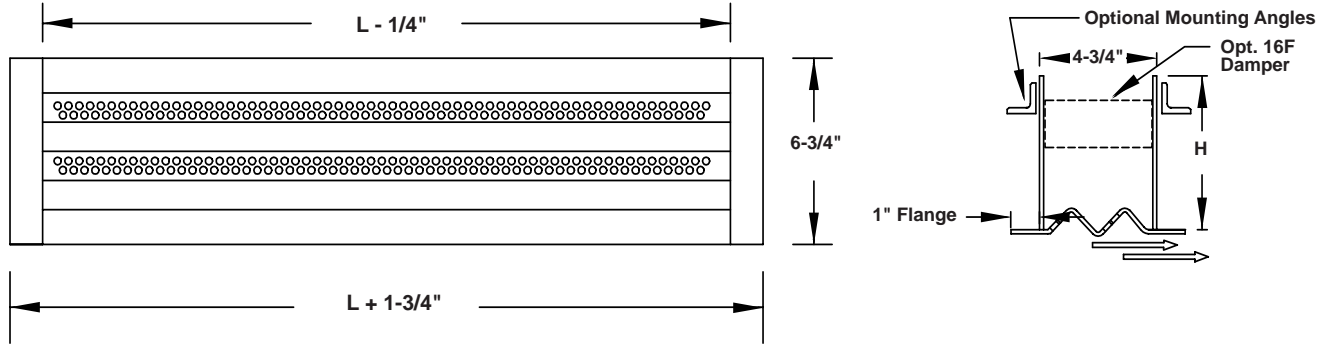


**SEG-9LS3H2 SECURITY DIFFUSER**  
**STEEL CONSTRUCTION - ONE WAY SUPPLY**  
 Complies with NIC recommendations and California BoP Title 24



**STANDARD CONSTRUCTION**

**Face:** 10 ga. thick steel stitch welded to sleeve. 1" face flange.  
**Hole Pattern:** 3/16" diameter holes on 9/32" staggered centers.  
**Sleeve:** 10 ga. steel with continuously welded seams.  
**Finish:** Two part polyurethane inside and out. White.  
 Maximum single piece section is 48"

**REQUIRED CONSTRUCTION:**

- Face Material:**  10 ga. steel (Std.)
- Hole Pattern:**  3/16" dia. holes on 9/32" centers (Std.)
- Face Flange "F"**  1" (Std.)  
 1-1/2" for mounting option 24
- Sleeve Material:**  10 ga. steel (Std.)  
 Other \_\_\_\_\_
- Finish:**  White (Std.)  
 Other \_\_\_\_\_
- Other Material:**  **SEG-9LS3H2A**  
 all 1/8" thick aluminum construction
- SEG-9LS3H2SS**  
 all stainless steel construction,  
 12 ga. type 304.

**MOUNTING OPTIONS:**

- 11A.** Two loose pieces of 1" x 1" x 3/16" mill finish angle loose for field welding. Length equal to longest side of diffuser. Other angle size \_\_\_\_\_
- 11B.** Rear angle frame of 1" x 1" x 3/16" mill finish steel completely assembled for field welding. Other angle size \_\_\_\_\_
- 12A.** Rear angle frame for bolting to sleeve. 1" x 1" x 3/16" steel with bolt holes 8" o.c. for 1/4" dia. bolts. No holes in sleeve. No bolts, nuts or washers. Other angle size \_\_\_\_\_
- 12B.** Same as **12A** with the addition of bolt holes in sleeve. (Advise ceiling thickness). Other angle size \_\_\_\_\_
- 24.** Countersunk screw holes in face 10" o.c. with #10-24 x 2" long Torx security machine screws for 1-1/2" maximum ceiling thickness. 1" x 1" x 1/8" steel angle frame with matching holes and foldover nuts. Requires 1-1/2" flange.
- 25.** Countersunk screw holes in face 10" o.c. with #10 x 1-1/2" long Torx security sheet metal screws. Other screw length \_\_\_\_\_

**ACCESSORIES:**

- 16F.** Face operated damper for total volume control. Dampers are adjustable using flat bladed screwdriver.
- ADP.** Supply plenums, 24 ga. galvanized steel, insulated or non-insulated. Furnished loose for field installation. 11-1/2" standard height.  
 Insulated  Non-insulated Inlet Size \_\_\_\_\_
- Other:** \_\_\_\_\_

**CAPE COD SYSTEMS**  
**CORPORATION**  
**TEL. 1-888-227-8555**

Qty.	Listed Length L	Sleeve O.D.		Ceiling Opening		Sleeve Height H	Ceiling Thickness	Accessories	Mounting Option	Tag
		L	W	L	W					

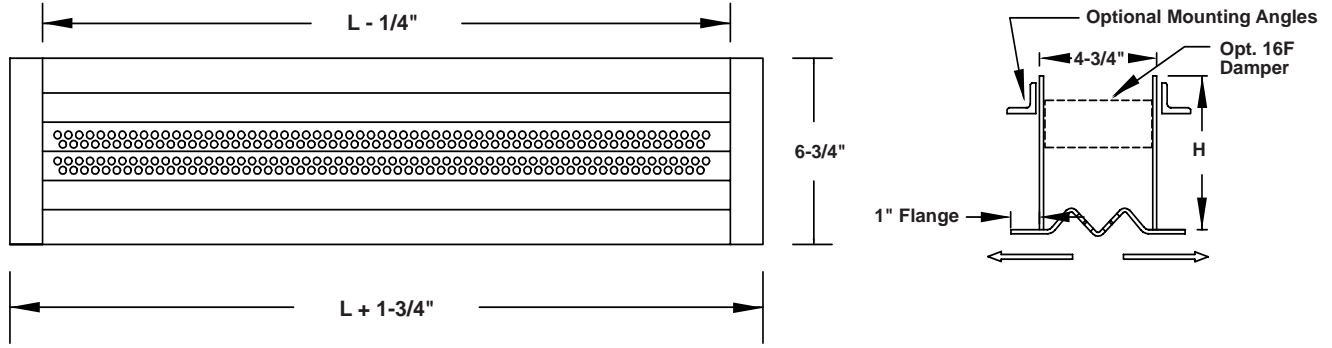
To maintain KEES' policy of continuous product improvement, we reserve the right to change prices, specifications, ratings, or dimensions without prior notice or obligation.

<b>Project</b>				<b>Location</b>			
<b>Architect / Engineer</b>							
<b>Contractor</b>			<b>Dwg. No.</b>	SEG-9LS3H2 01/21/13			
<b>Representative</b>			<b>Date</b>				

# SEG-9LS3TO SECURITY DIFFUSER

## STEEL CONSTRUCTION - TWO WAY SUPPLY

Complies with NIC recommendations and California BoP Title 24



**STANDARD CONSTRUCTION**

**Face:** 10 ga. thick steel stitch welded to sleeve. 1" face flange.  
**Hole Pattern:** 3/16" diameter holes on 9/32" staggered centers.  
**Sleeve:** 10 ga. steel with continuously welded seams.  
**Finish:** Two part polyurethane inside and out. White.  
 Maximum single piece section is 48"

**REQUIRED CONSTRUCTION:**

- Face Material:**  10 ga. steel (Std.)
- Hole Pattern:**  3/16" dia. holes on 9/32" centers (Std.)
- Face Flange "F"**  1" (Std.)  
 1-1/2" for mounting option 24
- Sleeve Material:**  10 ga. steel (Std.)  
 Other \_\_\_\_\_
- Finish:**  White (Std.)  
 Other \_\_\_\_\_
- Other Material:**  **SEG-9LS3TOA**  
 all 1/8" thick aluminum construction
- SEG-9LS3TOSS**  
 all stainless steel construction,  
 12 ga. type 304.

**MOUNTING OPTIONS:**


- 11A.** Two loose pieces of 1" x 1" x 3/16" mill finish angle loose for field welding. Length equal to longest side of diffuser. Other angle size \_\_\_\_\_
- 11B.** Rear angle frame of 1" x 1" x 3/16" mill finish steel completely assembled for field welding. Other angle size \_\_\_\_\_
- 12A.** Rear angle frame for bolting to sleeve. 1" x 1" x 3/16" steel with bolt holes 8" o.c. for 1/4" dia. bolts. No holes in sleeve. No bolts, nuts or washers. Other angle size \_\_\_\_\_
- 12B.** Same as **12A** with the addition of bolt holes in sleeve. (Advise ceiling thickness). Other angle size \_\_\_\_\_
- 24.** Countersunk screw holes in face 10" o.c. with #10-24 x 2" long Torx security machine screws for 1-1/2" maximum ceiling thickness. 1" x 1" x 1/8" steel angle frame with matching holes and foldover nuts. Requires 1-1/2" flange.
- 25.** Countersunk screw holes in face 10" o.c. with #10 x 1-1/2" long Torx security sheet metal screws. Other screw length \_\_\_\_\_

**ACCESSORIES:**

- 16F.** Face operated damper for total volume control. Dampers are adjustable using flat bladed screwdriver. Two sections over 24".
- ADP.** Supply plenums, 24 ga. galvanized steel, internally insulated or non-insulated. Furnished loose for field installation. 11-1/2" standard height.  
 Insulated  Non-insulated Inlet Size \_\_\_\_\_
- Other:** \_\_\_\_\_

Qty.	Listed Length L	Sleeve O.D.		Ceiling Opening		Sleeve Height H	Ceiling Thickness	Accessories	Mounting Option	Tag
		L	W	L	W					

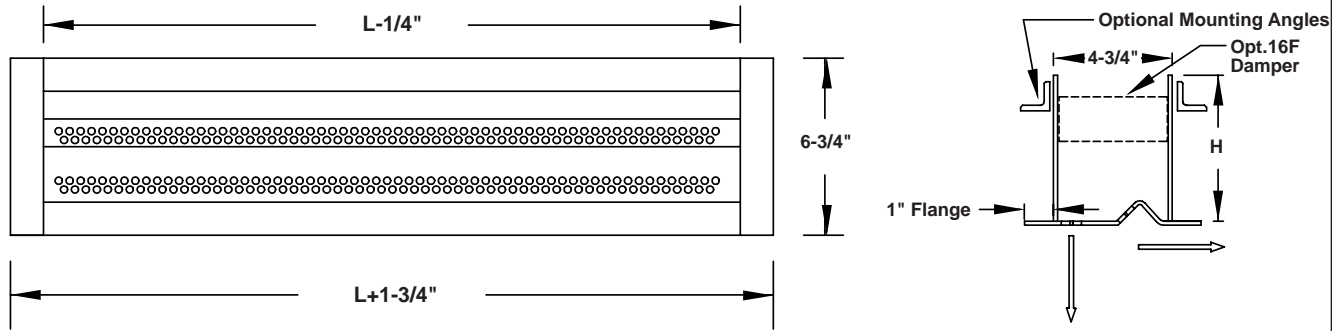
To maintain KEES' policy of continuous product improvement, we reserve the right to change prices, specifications, ratings, or dimensions without prior notice or obligation.

<b>Project</b>				<b>Location</b>			
<b>Architect / Engineer</b>							 <p><b>KEES INCORPORATED</b>                  Elkhart Lake, WI 53020                  Phone: (920) 876-3391                  FAX: (920) 876-3065                  Website: www.kees.com</p>
<b>Contractor</b>			<b>Dwg. No.</b>	SEG-9LS3TO 01/21/13			
<b>Representative</b>			<b>Date</b>				

# SEG-9LS3VH SECURITY DIFFUSER

## STEEL CONSTRUCTION - SUPPLY VERTICAL/HORIZONTAL

Complies with NIC recommendations and California BoP Title 24



### STANDARD CONSTRUCTION

**Face:** 10 ga. thick steel stitch welded to sleeve. 1" face flange.  
**Hole Pattern:** 3/16" diameter holes on 9/32" staggered centers.  
**Sleeve:** 10 ga. steel with continuously welded seams.  
**Finish:** Two part polyurethane inside and out. White.  
 Maximum single piece section is 48"

### REQUIRED CONSTRUCTION:

- Face Material:**  10 ga. steel (Std.)
- Hole Pattern:**  3/16" dia. holes on 9/32" centers (Std.)
- Face Flange "F"**  1" (Std.)  
 1-1/2" for mounting option 24
- Sleeve Material:**  10 ga. steel (Std.)  
 Other \_\_\_\_\_
- Finish:**  White (Std.)  
 Other \_\_\_\_\_
- Other Material:**  **SEG-9LS3VHA**  
 all 1/8" thick aluminum construction
- SEG-9LS3VHSS**  
 all stainless steel construction,  
 12 ga. type 304.

### MOUNTING OPTIONS:

- 11A.** Two loose pieces of 1" x 1" x 3/16" mill finish angle loose for field welding. Length equal to longest side of diffuser. Other angle size \_\_\_\_\_
- 11B.** Rear angle frame of 1" x 1" x 3/16" mill finish steel completely assembled for field welding. Other angle size \_\_\_\_\_
- 12A.** Rear angle frame for bolting to sleeve. 1" x 1" x 3/16" steel with bolt holes 8" o.c. for 1/4" dia. bolts. No holes in sleeve. No bolts, nuts or washers. Other angle size \_\_\_\_\_
- 12B.** Same as **12A** with the addition of bolt holes in sleeve. (Advise ceiling thickness). Other angle size \_\_\_\_\_
- 24.** Countersunk screw holes in face 10" o.c. with #10-24 x 2" long Torx security machine screws for 1-1/2" maximum ceiling thickness. 1" x 1" x 1/8" steel angle frame with matching holes and foldover nuts. Requires 1-1/2" flange.
- 25.** Countersunk screw holes in face 10" o.c. with #10 x 1-1/2" long Torx security sheet metal screws. Other screw length \_\_\_\_\_

### ACCESSORIES:

- 16F.** Face operated damper for total volume control. Dampers are adjustable using flat bladed screwdriver. Two sections over 24".
- ADP.** Supply plenums, 24 ga. galvanized steel, internally insulated or non-insulated. Furnished loose for field installation. 11-1/2" standard height.  
 Insulated  Non-insulated Inlet Size \_\_\_\_\_
- Other:** \_\_\_\_\_

**CAPE COD SYSTEMS  
 CORPORATION  
 TEL. 1-888-227-8555**

Qty.	Listed Length L	Sleeve O.D.		Ceiling Opening		Sleeve Height H	Ceiling Thickness	Accessories	Mounting Option	Tag
		L	W	L	W					

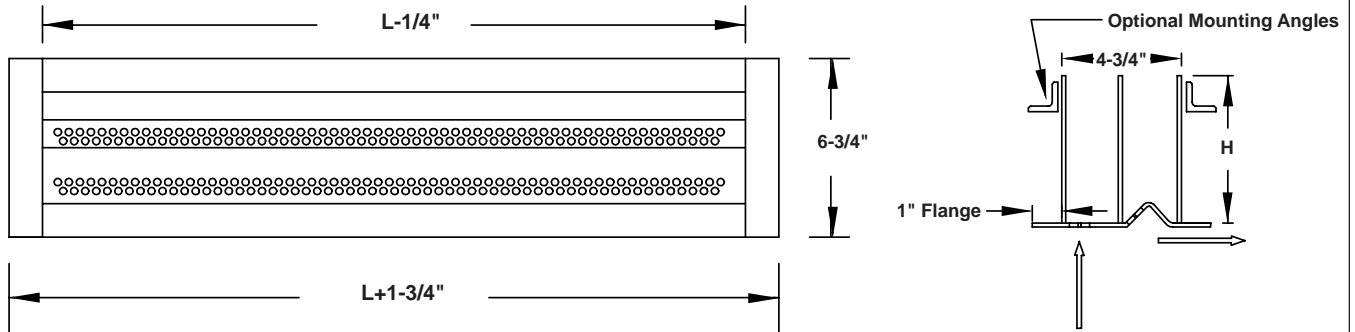
To maintain KEES' policy of continuous product improvement, we reserve the right to change prices, specifications, ratings, or dimensions without prior notice or obligation.

<b>Project</b>		<b>Location</b>	
<b>Architect / Engineer</b>			
<b>Contractor</b>		<b>Dwg. No.</b>	SEG-9LS3VH 01/21/13
<b>Representative</b>		<b>Date</b>	_____

# SEG-9LS3SR SECURITY DIFFUSER

## STEEL CONSTRUCTION - SUPPLY / RETURN

Complies with NIC recommendations and California BoP Title 24



**STANDARD CONSTRUCTION**

**Face:** 10 ga. thick steel stitch welded to sleeve. 1" face flange.  
**Hole Pattern:** 3/16" diameter holes on 9/32" staggered centers.  
**Sleeve:** 10 ga. steel with continuously welded seams.  
**Divider:** 14 ga. steel titch welded to face and sleeve.  
**Finish:** Two part polyurethane inside and out. White.  
 Maximum single piece section is 48"

**REQUIRED CONSTRUCTION:**

- Face Material:**  10 ga. steel (Std.)
- Hole Pattern:**  3/16" dia. holes on 9/32" centers (Std.)
- Face Flange "F"**  1" (Std.)  
 1-1/2" for mounting option 24
- Sleeve Material:**  10 ga. steel (Std.)  
 Other \_\_\_\_\_
- Finish:**  White (Std.)  
 Other \_\_\_\_\_
- Other Material:**  **SEG-9LS3SRA**  
 all 1/8" thick aluminum construction
- SEG-9LS3SRSS**  
 all stainless steel construction,  
 12 ga. type 304.

**MOUNTING OPTIONS:**

- 11A.** Two loose pieces of 1" x 1" x 3/16" mill finish angle loose for field welding. Length equal to longest side of diffuser. Other angle size \_\_\_\_\_
- 11B.** Rear angle frame of 1" x 1" x 3/16" mill finish steel completely assembled for field welding. Other angle size \_\_\_\_\_
- 12A.** Rear angle frame for bolting to sleeve. 1" x 1" x 3/16" steel with bolt holes 8" o.c. for 1/4" dia. bolts. No holes in sleeve. No bolts, nuts or washers. Other angle size \_\_\_\_\_
- 12B.** Same as **12A** with the addition of bolt holes in sleeve. (Advise ceiling thickness). Other angle size \_\_\_\_\_
- 24.** Countersunk screw holes in face 10" o.c. with #10-24 x 2" long Torx security machine screws for 1-1/2" maximum ceiling thickness. 1" x 1" x 1/8" steel angle frame with matching holes and foldover nuts. Requires 1-1/2" flange.
- 25.** Countersunk screw holes in face 10" o.c. with #10 x 1-1/2" long Torx security sheet metal screws. Other screw length \_\_\_\_\_

**ACCESSORIES:**

- 16F.** Face operated damper for total volume control. Dampers are adjustable using flat bladed screwdriver. Two sections over 24".
- ADP.** Supply plenums, 24 ga. galvanized steel, internally insulated or non-insulated. Furnished loose for field installation. 11-1/2" standard height.  
 Insulated  Non-insulated Inlet Size \_\_\_\_\_
- Other:** \_\_\_\_\_

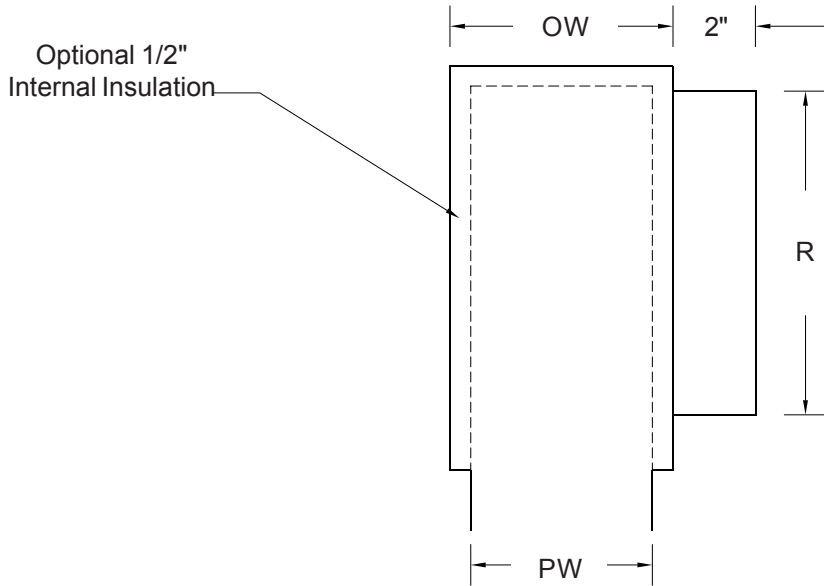
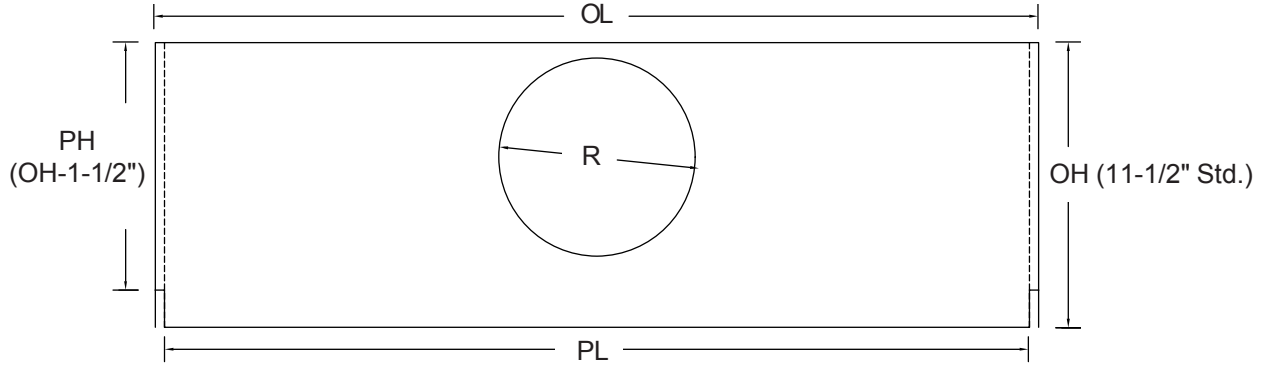
**CAPE COD SYSTEMS  
 CORPORATION**  
**TEL. 1-888-227-8555**

Qty.	Listed Length L	Sleeve O.D.		Ceiling Opening		Sleeve Height H	Ceiling Thickness	Accessories	Mounting Option	Tag
		L	W	L	W					

To maintain KEESS' policy of continuous product improvement, we reserve the right to change prices, specifications, ratings, or dimensions without prior notice or obligation.

<b>Project</b>		<b>Location</b>	
<b>Architect / Engineer</b>			
<b>Contractor</b>		<b>Dwg. No.</b>	SEG-9LS3SR 01/21/13
<b>Representative</b>		<b>Date</b>	

**ADP PLENUM  
FOR USE WITH  
SEG-9LS3 SECURITY DIFFUSER  
TWO WAY THROW PATTERN  
CAPE COD SYSTEMS CORPORATION  
TEL. 1-888-227-8555**



Note 1) Collars offset on 48" lengths  
2) Inlets 10" and larger will be oval

24 ga. galvanized steel construction.

Qty.	Diffuser Listed Length	Plenum Length		Plenum Height		Plenum Inlet R	Plenum Width		Internal Insulation		Tag
		OL	PL	OH	PH		OW	PW	Yes	No	
	24"	23-7/8"	23-3/8"				5-3/8"	4-3/8"			
	36"	35-7/8"	35-3/8"				5-3/8"	4-3/8"			
	48"	47-7/8"	47-3/8"				5-3/8"	4-3/8"			

To maintain KEES' policy of continuous product improvement, we reserve the right to change prices, specifications, ratings, or dimensions without prior notice or obligation.

<b>Project</b>		<b>Location</b>	
<b>Engineer</b>			
<b>Architect</b>		<b>Dwg. No.</b>	SEG-9LSADP 11/07/06
<b>Contractor</b>		<b>Date</b>	