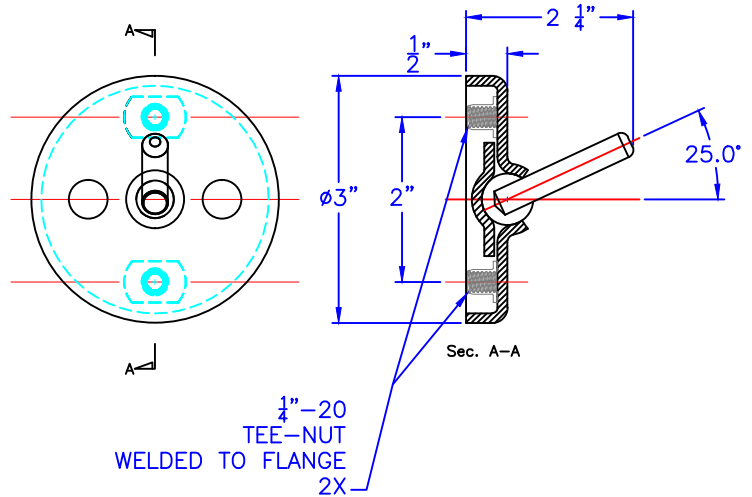
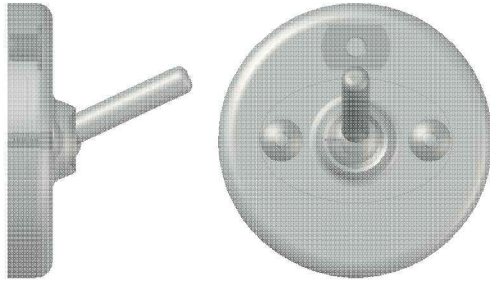




Technical Data

S-4039-SS

SECURITY TOWEL HOOK, CONCEALED MOUNT



NOTE: ACCESS BEHIND THE WALL IS REQUIRED FOR INSTALLATION

Construction:

FLANGE: 11 GAUGE X 3" DIAMETER TYPE 304 STAINLESS STEEL.

HOOK: $\frac{5}{16}$ " DIAMETER STAINLESS STEEL ROD WITH PIVOTING BALL JOINT THAT RELEASES UNDER EXCESSIVE LOAD.

TEE-NUTS: $\frac{1}{4}$ "-20 STAINLESS STEEL WELDED TO BACK OF FLANGE.

Operation:

HOOK WITH PIVOTING BALL JOINT RELEASES WHEN EXCESSIVE LOAD IS APPLIED. THE HOOK CAN BE RESET BY HAND WHEN REQUIRED.

Installation:

NOTE: ACCESS BEHIND THE WALL IS REQUIRED FOR INSTALLATION.

MARK AND DRILL HOLES AT 2" CL AT DESIRED HEIGHT.

FLANGE HAS (2) WELDED TEE-NUTS TO RECEIVE $\frac{1}{4}$ "-20 STUDS (NOT PROVIDED). FOR CONCEALED MOUNT. FASTEN STUDS TO TEE-NUTS. CAUTION NOT TO OVER TIGHTEN STUDS.

CAUTION: UNIT IS ONLY AS STRONG AS THE ANCHORING DEVICES AND THE WALL IN WHICH IT IS MOUNTED TO.

Guide Specification:

CONCEALED MOUNT SECURITY TOWEL HOOK.
HOOK RELEASES WHEN EXCESSIVE LOAD IS APPLIED.
HOOK IS RESET WHEN REQUIRED.
ONE PIECE CONSTRUCTION.
SATIN #4 FINISH.

CAPE COD SYSTEMS CORPORATION
TEL: 1-888-227-8555
www.capecodsystems.com