

G02JDR31XX Series Bariatric

Bariatric folding shower seat with legs

Mounting hardware supplied for wood stud installation.

Product Data

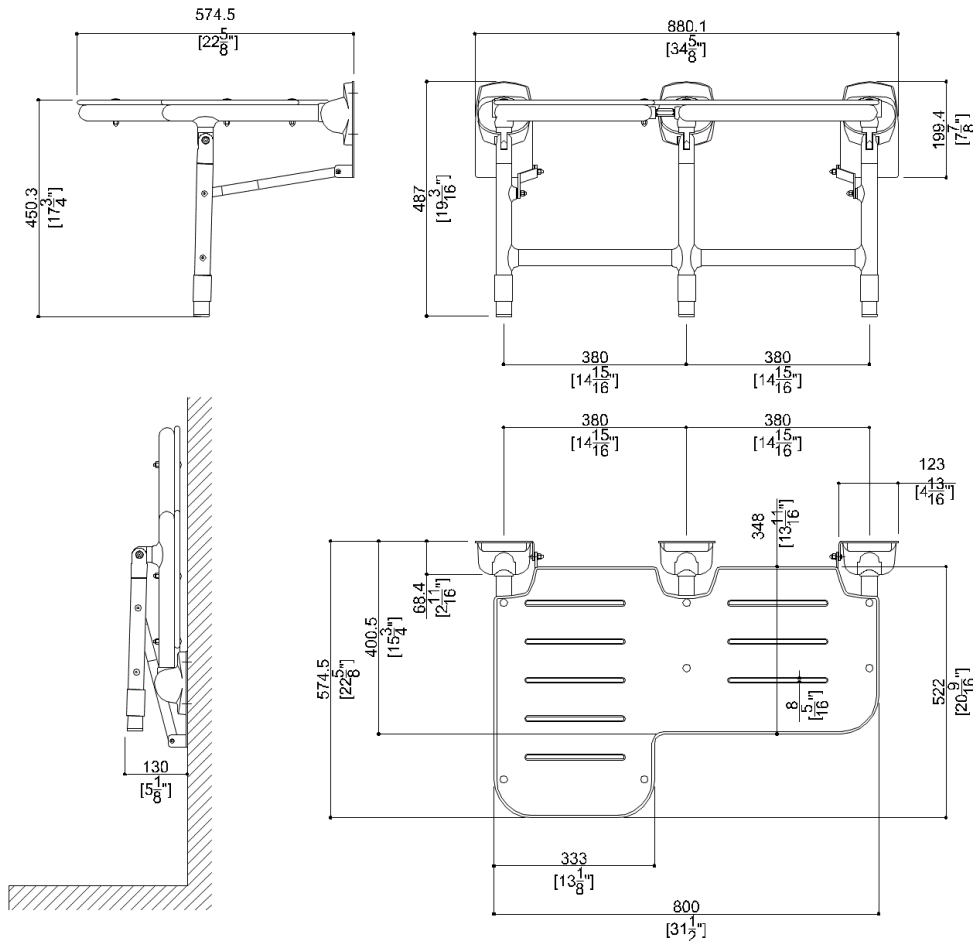
Overall Dimensions (Inch.)	34-5/8x22-5/8x19-3/16
Net Weight (lbs.)	35.49

Installation Hardware Details

Stainless steel screw	TE inox A2 8x70
-----------------------	-----------------

Packaging Details

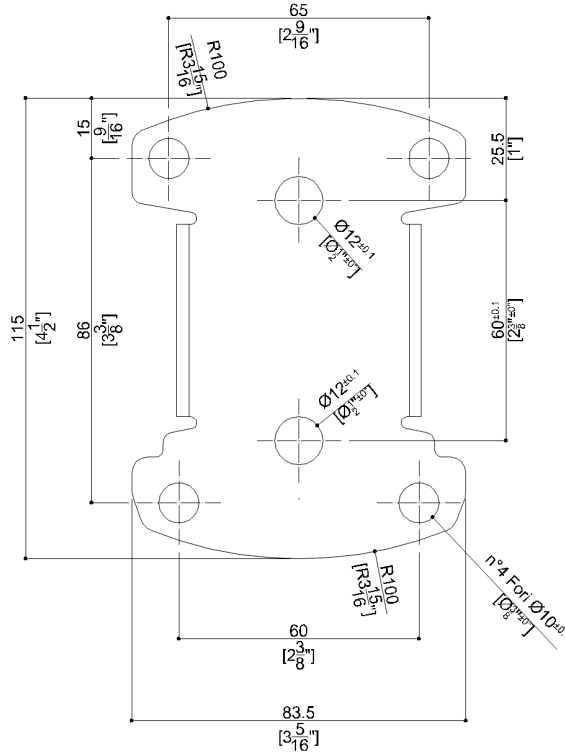
Package	Cardboard package
Package dimensions (Inch.)	35 x 5-11/16 x 29-5/16
Weight with Packaging (lbs.)	38.8



G02JDR31XX Series Bariatric

Y88JKS27

Stainless steel AISI304 fixing plate



Available Finishes (xx)

Seat

W8
Cold White

Structure

W1
White

Materials and finishes

Polyamide	Polished
HPL	Polished
Stainless Steel	Rough
Vinyl	Polished

Load Capacity

Vertical 1000 lbs.

Warning

Before installation and use, read the installation and use instructions in their entirety. If questions arise please contact Ponte Giulio company.

Cleaning

Product can be cleaned with a cloth and warm soapy water. Non abrasive, solvent free cleaners can also be used.

Warranty

Please visit www.pontegiulio.com for complete warranty details.