

G02JDL31XX Series Bariatric

L-shaped double folding bariatric shower seat with legs

Mounting hardware supplied for wood stud installation.

Product Data

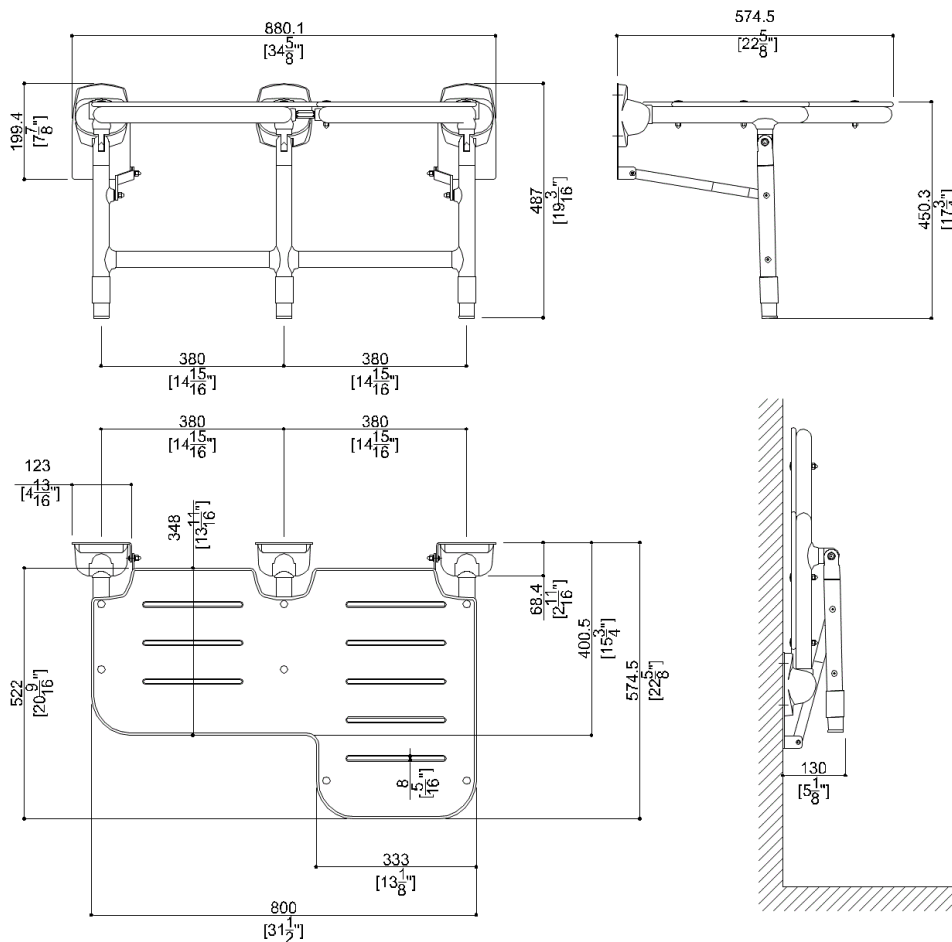
Overall Dimensions (Inch.)	34-5/8x22-5/8x19-3/16
Net Weight (lbs.)	35.49

Installation Hardware Details

Stainless steel screw	TE inox A2 8x70
-----------------------	-----------------

Packaging Details

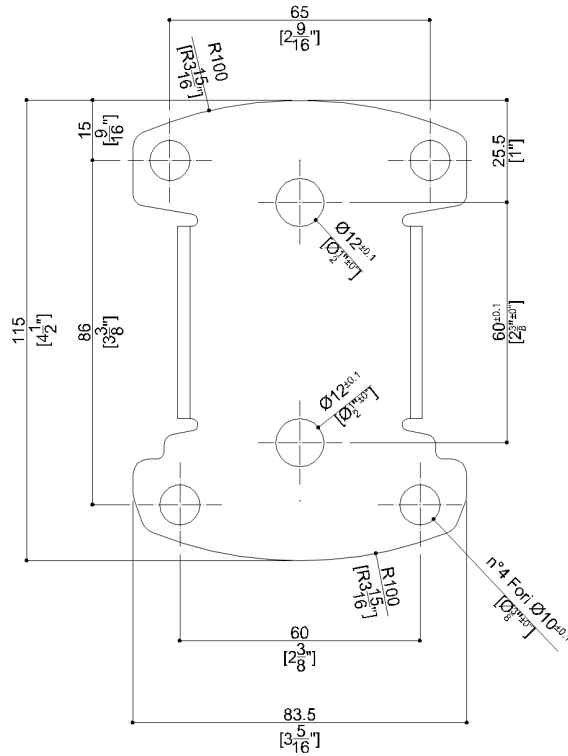
Package	Cardboard package
Package dimensions (Inch.)	35 x 5-11/16 x 29-5/16
Weight with Packaging (lbs.)	38.8



G02JDL31XX Series Bariatric

Y88JKS27

Stainless steel AISI304 fixing plate



Available Finishes (xx)

Seat

- W8  Cold White

Structure

- W1  White

Materials and finishes

Polyamide	Polished
Stainless Steel	Rough
Vinyl	Polished
HPL	Matt

Load Capacity

Vertical 1000 lbs.

Warning

Before installation and use, read the installation and use instructions in their entirety. If questions arise please contact Ponte Giulio company.

Cleaning

Product can be cleaned with a cloth and warm soapy water. Non abrasive, solvent free cleaners can also be used.