

murdock®
SINCE 1853

BOTTLE FILLER

BF168 Series

REFRIGERATED SURFACE MOUNT
SENSOR OPERATED
BOTTLE FILLER

STANDARD FEATURES

- Fold Down Housing for easy Maintenance Access
- 120 VAC/9 VDC plug-in Transformer
- Lead Free
- Meets ADA Forward and Side Reach Requirements
- Mounting Frame
- Back Panel and Louvered Grille
- 20 Seconds Maximum Run Time
- Laminar Flow Water Supply
- 1.00 GPM Fill Rate
- 100-Mesh Inlet Strainer

SUGGESTED SPECIFICATIONS

Model BF168 is a Refrigerated Surface Mount Sensor Operated Bottle Filler that shall deliver a minimum of 8.0 GPH (30.3 LPH) of water at 50°F (10°C) cooled from 80°F (26.7°C) inlet water and 90°F (32.2°C) ambient. Bottle Filling unit shall include Sensor Operated activation with a 20 second maximum run time. Cooling system shall use R-134a refrigerant and be capillary tube regulated. An adjustable thermostat with an off position shall regulate the refrigeration system. Housing has a slim and trim look that blends into your environment. Designed for Maintenance Advantage installation and service. Bottle Filler shall provide approximately 1.0 GPM flow rate with a Laminar Flow Spout to minimize splashing. Bottle Filler is fabricated of type 304 stainless steel polished to a satin finish with antimicrobial impact resistant ABS surfaces. Optional -BCD (Bottle Counter Display) indicates the quantity of 16 oz disposable Plastic Bottles saved from a land fill. -BCD option displays the Water Filter Status and includes LED Light to illuminate and brighten the Bottle Fill area when a Bottle is detected. Optional Water Filter meets NSF 42 and 53 requirements and reduces lead content in the drinking water by 99%. When installed properly, the Bottle Filler complies with ADA forward and side reach requirements. Unit is complaint to the Air Conditioning and Refrigeration Institute Standard 1010 and is certified to Public Law 111-380 (NO-LEAD) and NSF/ANSI/CAN 61.

Water Chiller Specifications:

Model Number	GPH*	Rated Watts	Full Load Amps	Approx. Shipping Weight
A9100080	8.0	390	4.6	80 lbs.

* GPH of 50°F water at 90°F ambient room temperature and 80°F inlet water temperature
Compressor motor operates on 115 Volt / 60 Hz single phase.

Complies
with the
following
standards:



H₂O
to go!®



Model BF168-BCD Shown
**U.S. PATENT D876,890 S

"INDOOR USE ONLY"

MODEL:

(Must Specify)

- ☐ -BF168 Refrigerated Surface Mounted Sensor Operated Bottle Filler

OPTIONS

(additional costs may be incurred)

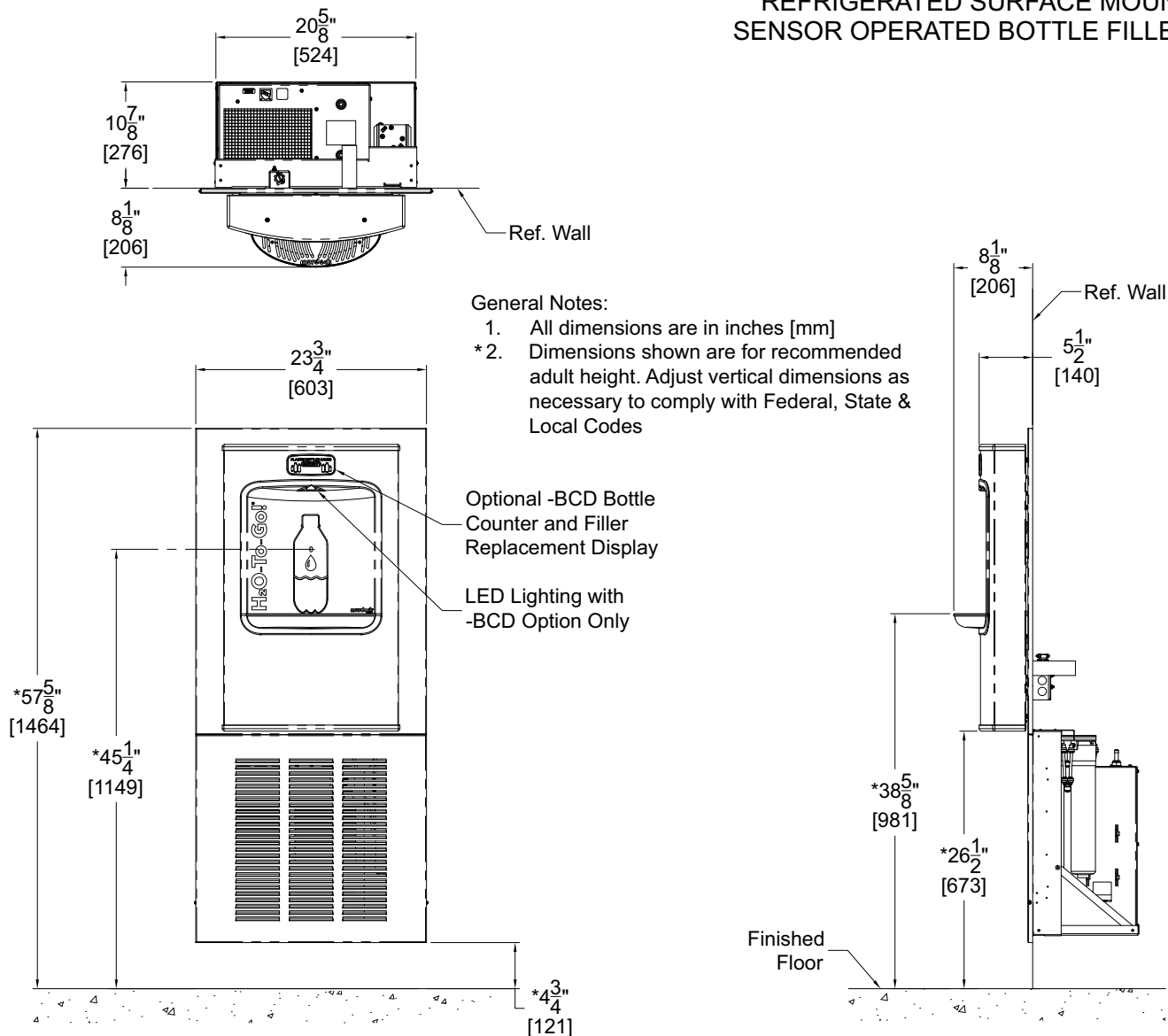
- ☐ -BCD Bottle Counter Display
- ☐ -LOGO Customer Specified Logo / Graphics
- ☐ -WF1 1500-gallon capacity, NSF 42 and 53, 1 micron Lead Reduction Water Filter
- ☐ -WF3 3000-gallon capacity, NSF 42 and 53, 1 micron Lead Reduction Water Filters
- ☐ -220V 220 volt / 50 Hz or 60Hz Compressor

murdock®
SINCE 1853

BOTTLE FILLER

BF168 Series

REFRIGERATED SURFACE MOUNT
SENSOR OPERATED BOTTLE FILLER



Murdock Mfg.™ warrants that its products are free from defects in material or workmanship under normal use and service for a period of 18 months from date of shipment. The sealed refrigeration system is warranted for five years. Murdock's liability under this warranty shall be discharged solely by replacement or repair of defective material, provided Murdock™ is notified in writing within one year from date of shipment, F.O.B. Industry, California.

SELECTION SUMMARY
& APPROVAL FOR
MANUFACTURING

Model Number & Options _____ Quantity _____

Company _____

Contact _____ Title _____

Signature _____
(Approval for Manufacturing) _____ Date _____

All dimensions are subject to manufactures tolerance of plus or minus $\frac{1}{2}"$ nominal and subject to change without notice. Murdock assumes no responsibility for use of void or superseded data. Dimensions may change with the addition of optional accessories. Murdock Mfg.™, Member of Morris Group International™. Please visit www.murdockmfg.com for most current specifications.