

**Simplicity™ Collection Automatic Roll Paper Towel Dispenser & Waste Receptacle - Battery Operated – Surface Mounted**

Paper Towel Combination Units

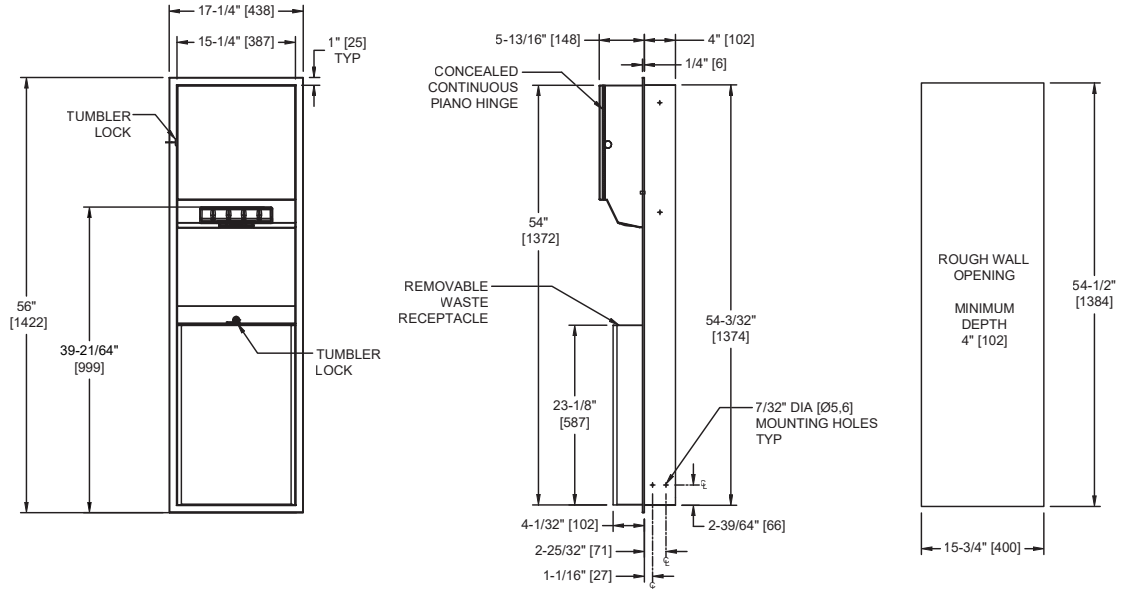
Simplicity

MasterFormat Section 10 28 13

**CAPE COD SYSTEMS CORPORATION**

**TEL. 1-888-227-8555**

**www.capecodsystems.com**



Scan for Information



**SUSTAINABILITY/LEED**

MR 4.1 (1) MR 6 (1) EQ 4.2 (1)  
MR 4.2 (1) EQ 4.1 (1) EQ 4.4 (1)

**NOTE:**

ALL DIM'S INCH [MM]  
ILLUSTRATION FOR REF ONLY AND NTS  
FOR CLEANING INSTRUCTIONS SEE APPROPRIATE SECTIONS IN  
PRODUCT CARE & MAINTENANCE BULLETIN (PCM) ON ASI WEBSITE

**PRODUCT OVERVIEW**

Proximity sensing no-touch unit dispenses a pre-set length per cycle from 8" [205] or 9" [230] wide standard towel roll up to 800 ft. (244m) long and has stub roll capability for continuous dispensing. 12 gal. (45.4 liters) disposal capacity. Surface mounted with stainless steel collar. Powered by 4 D-size batteries (not included).

**KEY FEATURES & SPECIFICATIONS**

- Seamless construction, crisp lines and minimalistic design
- "Touch Free" Dual Paper Towel Dispenser
- Cabinet, Frame & Waste Container are made of 22 gauge Type 304 Stainless Steel - Satin Finish
- Concealed multi-staked hinge - 3/16" diameter [Ø5], Tumbler lock keyed
- Surface Mounted - w/ 9" Collar
- Automatic - Battery Operated - "No Touch"
- Roll Towels - up to 800 ft. Length / 12.0 Gal. (45.4 L) Waste Capacity

**OPERATION & MAINTENANCE**

Towels are dispensed one at a time automatically when hands are placed in sensor zone until supply is depleted. Length of towel dispensed is predetermined by owner by making selections on three (3) three position switches for length, delay, economy. Unit may be reloaded with a full roll to automatically start when finished with an existing partial roll and will continue to feed properly when reloaded with a full roll and partial roll is transferred to stub roll position. Refill dispenser by unlocking door and replacing towel roll for an empty or partially empty unit. Waste container has internal hooks for a reusable vinyl liner bag (not supplied) or may be used with disposable PVC trash liner bags (by others). LED indicates sensing and battery condition. Locking compartment door and receptacle retainer prevents unauthorized access and roll and/or receptacle removal. Instructional label is provided inside cabinet for service replacement of roll towels and setting of length, dispense delay and economy switches. Dispenser supply is replenished, batteries are replaced and waste container is emptied manually on cycles determined by maintenance needs.

**TECHNICAL INFORMATION / PRODUCT PROPERTIES**

Property	Value
Dimensions	17-1/4" [438] W x 56" [1422] H x 10-1/4" [260] D
Construction	Type 304 Stainless Steel - Satin Finish Concealed multi-staked hinge - 3/16" diameter [Ø5]
Power	Batteries: Four (4) D-size
Operation	Automatic "No-Touch"
Mounting	Surface Mounted - w/ 9" Collar
Capacity	Roll Towels - up to 800 ft. Length / 12.0 Gal. (45.4 L) Waste Capacity

**INSTALLATION**

Install unit on wall using #10 self-threading screws (by others) through concealed mounting holes provided. For compliance with ICC/ANSI A-117.1, 2015 ABA Standards and 2010 ADA Accessibility Standards install unit so that top edge of towel dispenser opening is 48" [1219] maximum Above Finished Floor (AFF) only if clear floor reach access is provided. SM-Collar is slid onto cabinet back prior to installing on wall. For general utility install unit with top of towel dispenser opening between 49" and 56" [1245 to 1422] AFF.

**CAPE COD SYSTEMS CORPORATION**

**TEL. 1-888-227-8555**

**[www.capecodsystems.com](http://www.capecodsystems.com)**

**WARRANTY**

One (1) Year from date of Invoice