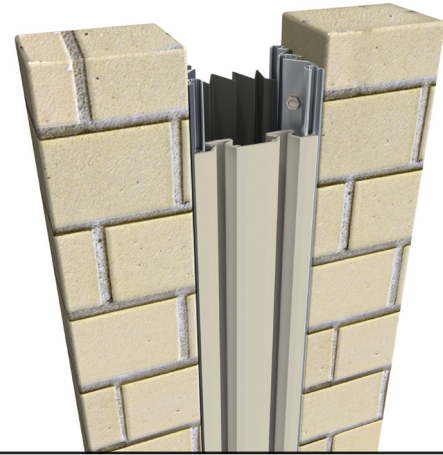


615 Series

A07 - Wall to Wall or Ceiling to Ceiling
 A09 - Wall to Corner or Wall to Ceiling

**CAPE COD SYSTEMS
 CORPORATION**
TEL. 1-888-227-8555



Movement Rating ± 50%

Product Guide



Seismic



Exterior



Interior



Fire Rated
Option



Vapor Barrier
Option

- ▶ Flush mount interior and exterior systems reduce sightline
- ▶ Santoprene® seals - Field heat weldable for weather tight transitions
- ▶ Standard seal colors: black, beige, gray, off white and bright white. Custom colors available upon request.
- ▶ 4 component exterior system includes integral backseal
- ▶ May be installed to various substrates with mechanical anchors or epoxy adhesive

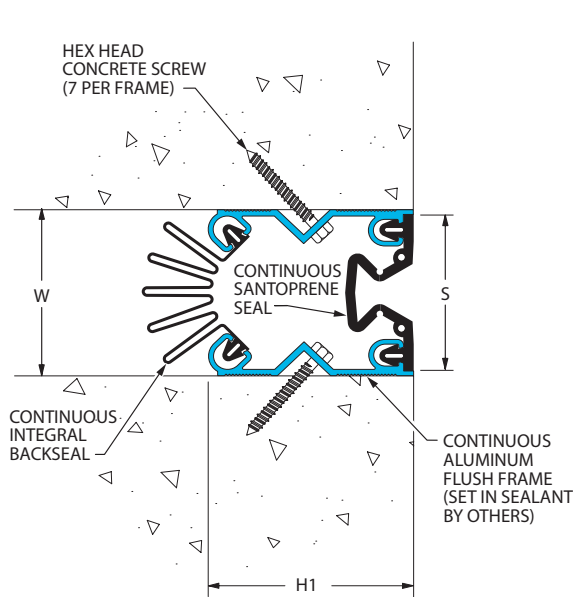
Application	System	W		H1		H2		S		B		Movement +/-			
		Joint Width		Frame Height 1		Height 2		Sightline		Blockout		Horizontal		Vertical	
		US	mm	US	mm	US	mm	US	mm	US	mm	US	mm	US	mm
Wall/Wall Ceiling/Ceiling	615-A07-050	2"	51	2 7/16"	61	*	*	2"	51	*	*	1"	25	1"	25
	615-A07-075	3"	76	2 7/16"	61	*	*	3"	76	*	*	1 1/2"	38	1 1/2"	38
	615-A07-100	4"	102	2 7/16"	61	*	*	4"	102	*	*	2"	51	2"	51
	615-A07-125	5"	127	2 7/16"	61	*	*	5"	127	*	*	2 1/2"	63	2 1/2"	63
615-A07-150	6"	152	2 7/16"	61	*	*	6"	152	*	*	3"	76	3"	76	
Wall/Corner Wall/Ceiling	615-A09-050	2"	51	2 7/16"	61	*	*	2"	51	*	*	1"	25	1"	25
	615-A09-075	3"	76	2 7/16"	61	*	*	3"	76	*	*	1 1/2"	38	1 1/2"	38
	615-A09-100	4"	102	2 7/16"	61	*	*	4"	102	*	*	2"	51	2"	51
	615-A09-125	5"	127	2 7/16"	61	*	*	5"	127	*	*	2 1/2"	63	2 1/2"	63
	615-A09-150	6"	152	2 7/16"	61	*	*	6"	152	*	*	3"	76	3"	76

May be available in larger widths, please contact Inpro Corporation for more details.

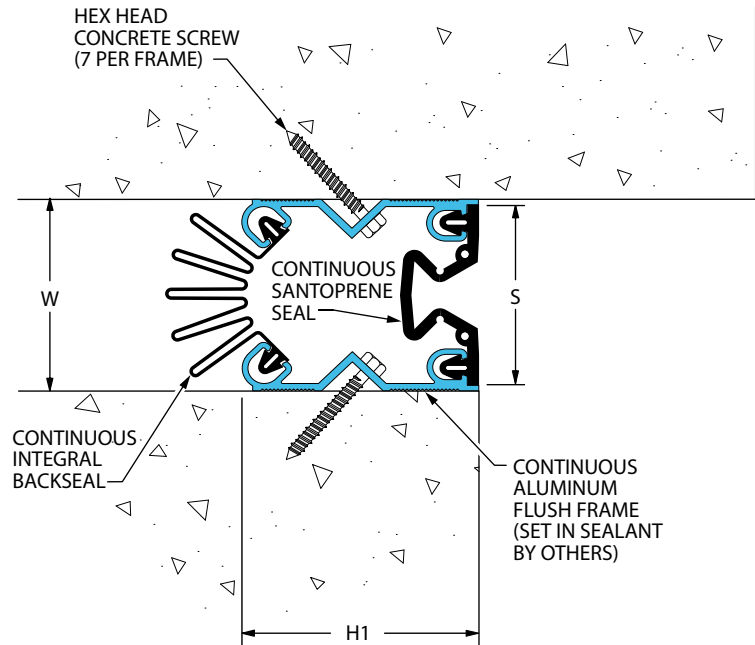
615 Series

Flush Mount Wall and Ceiling Systems

615-A07 Wall/Wall Ceiling/Ceiling
(2" (50mm) system shown)



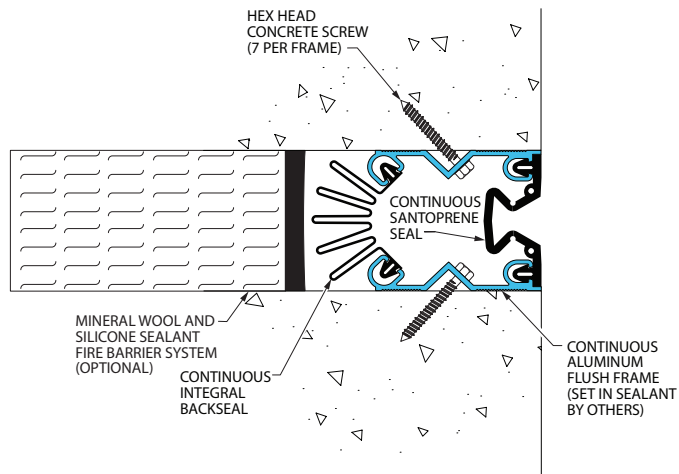
615-A09 Wall/Corner Ceiling/Corner
(2" (50mm) system shown)



615 Series

Option

fire Mineral Wool &
Sealant Fire Barrier System
(615-A07-050 system shown)



Fire Blanket System
(615-A07-050 system shown)

