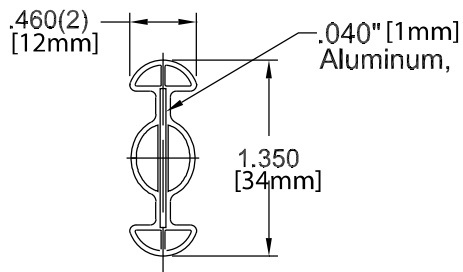


Formatrac®

CAPE COD SYSTEMS CORPORATION

TEL. 1-888-227-8555

Bendable Track



- Formatrac® bendable track is manufactured with a 99% recycled aluminum core and ABS (non-PVC) shell. This patented product results in the most durable and lightweight bendable track.
- Formatrac® bendable track is available in four standard lengths; 8'[2.4m], 16'[4.9m], 40'[12.2m] rolls and 105'[32.0m] rolls. This allows for virtually any length or radius bend required.
- Formatrac® bendable track is both easy to install and works with virtually any ceiling type including both tegular and flush ceiling tile.
- Formatrac® bendable track carriers are load tested to hold 50 lbs. [22.7k] per carrier.
- Formatrac® bendable track is Class A Fire Rated.

Formatrac® Bendable Track

Suggested Specifications

PART 1 - GENERAL

1.01 SUMMARY

A. Formatrac® Bendable Track Cubicle Tracking Systems

1.02 SECTION INCLUDES

A. Formatrac® Bendable Track

B. Track accessories

1.03 SYSTEM DESCRIPTION

A. Performance Requirements: Provide Formatrac® Bendable Track system that conform to the following requirements of regulatory agencies and the quality control of Clickeze ® Privacy Systems , Inpro Corporation.

1. Fire Performance Characteristics: Provide Formatrac® Bendable Track conforming with the NFPA Class A fire rating. Surface burning characteristics as determined by ASTM E-84, for Formatrac® Bendable Track shall be a maximum flame spread of 25 and a maximum smoke developed of 160

1.04 SUBMITTALS

A. Product Data: Manufacturer's printed product data for each type of cubicle tracking system specified.

B. Detail Drawings: Mounting details with the appropriate fasteners for specific project substrates.

C. Samples: Verification samples of cubicle track, 36" (.915m) long, in full size, with carriers, spring clip with grid clip and end caps.

D. Manufacturer's Installation Instruction: Printed installation instructions for each cubicle tracking system.

1.05 DELIVERY, STORAGE AND HANDLING

A. Deliver materials in unopened factory packaging to the jobsite.

B. Inspect materials at delivery to assure that specified products have been received.

C. Store in original packaging in a climate controlled location away from direct sunlight.

1.06 PROJECT CONDITIONS

A. Environmental Requirements: Products must be installed in an interior climate controlled environment.

1.07 WARRANTY

A. Standard Clickeze® Limited Lifetime Warranty against material and manufacturing defects.

PART 2 - PRODUCTS

2.01 MANUFACTURER

A. Acceptable Manufacturer:

Clickeze ® Privacy Systems , Inpro Corporation,
PO Box 406 Muskego, WI 53150 USA;
Telephone: 800.222.5556, Fax: 888.715.8407,
www.Inprocorp.com

B. Substitutions: Not permitted

C. Provide all cubicle tracking systems from a single source.

2.02 MANUFACTURED UNITS

A. Cubicle Tracking System

1. Inpro Formatrac® Bendable Cubicle Track with aluminum core.

Dimensions: height 1.375"x (34.93mm),
width .450" (11.43mm).

NOTE: 8" (203mm) minimum radius for track bends.

a. White smooth finish

CE2008 - 8 foot length (2.44m)

CE200016 - 16 foot length (4.88m)

CE200040 - 40 foot length (12.2m)

CE200105 - 105 foot length (32.02m)

2.03 TRACK COMPONENTS

A. Carrier: Provide thermoplastic carrier with aluminum hook.

CE2040 Carrier

B. End Cap: Provide thermoplastic end caps in a color matching the track.

CE2080 End Cap, white

C. Fixed End Cap: Provide thermoplastic end caps that allow the curtain to remain attached at that end.

CE2100 Fixed End Cap, white

D. Spring Clip: Provide spring steel spring clip to hold track secure to the ceiling in a color matching the track.

CE2200 Spring Clip, White

E. Swivel End Cap: Provide variable angle end cap that allows the track to attach to the wall at any angle.

CE2080-SW, White.

F. Swivel End Cap with Fixed End Hook: Provide variable angle end cap that allows the track to attach to the wall at any angle and allows the curtain to remain attached at that end.

CE2100-SW, White.

G. Spring Clip with Grid Clip: Provide spring steel spring clip with metal grid clip to hold track secure to ceiling grid in a color matching the track.

CE2500 Spring Clip with grid clip, White for 15/16" [23.8mm] grid.

CE2500-916 Spring Clip with grid clip, White for 9/16" [14.3mm] ceiling grid.

H. Radius Clip, 19": Provide an extruded aluminum and formed radius clip to create 90° bends with Formatrac®. Radius clip shall be white.

CE2200-RC, White.

2.04 MATERIALS

A. ABS: Continuously extruded bendable track shall be produced from ABS (acrylonitrile butadiene styrene) with and aluminum core.

B. Aluminum: Continuously extruded bendable track shall be produced with an aluminum core. Core shall be alloy 3105-H2.

C. Molded Components: Molded components shall be manufactured from injection molded thermoplastic.

2.05 FINISH

A. Formatrac® Bendable Track shall be white with a smooth finish.

PART 3 - EXECUTION

3.01 EXAMINATION

A. Examine areas and conditions in which the cubicle tracking systems will be installed.

1. Complete all finishing operations, including painting, before beginning installation of cubicle tracking system materials.

2. Verify that surfaces and above ceiling supports are ready to receive work.

3.02 PREPARATION

A. General: Prior to installation, clean substrate to remove dust, debris and loose particles.

3.03 INSTALLATION

A. General: Locate the cubicle track as indicated on the approved detail drawing for the appropriate substrate and in compliance with the Clickeze ® installation instructions.

B. Installation of Formatrac® Bendable Track

1. Install Formatrac® Bendable Track, secure and rigid, and true to ceiling line.

2. Secure track to ceiling system. Install to ceiling grid with Spring Clip with Grid Clip or Spring Clip and mechanical fasteners.

3. Slide carriers onto the track.

4. Install end caps.

5. Install curtains on carriers ensuring smooth operation.

3.04 CLEANING

A. At completion of the installation, remove any debris and clean surfaces in accordance with the Clickeze ® clean up and maintenance instructions.